

Using this guide - The Rankings

All entries stand out as being of particular national heritage interest but there are inevitably notable variations in terms of intactness and quality, hence the ranking system we have adopted.

★★★ Three Star pubs have stayed wholly or largely intact for the last fifty years, or retain particular rooms or features that are truly rare or exceptional, or display a combination of the two.

★★ Two Star pubs have interiors where the intactness and quality levels will be somewhat lower than for Three Star

★ The interiors of One Star pubs will have either readily identifiable historic layouts or retain rooms or features of special interest but more significant changes are allowable.

These online guides provide you with up-to-date descriptions, on a region by region basis, of pubs listed on our National Inventory of Historic Pub Interiors. Please note that the content will differ from that in the hard-copy guides where the pub information dates to when that guide was published. The hard-copy guides also contain more editorial material.

Contents

Introduction

The National Inventory

The Regional Inventories

Characteristics of Scottish Pubs

Aberdeen & Grampian

Argyll & The Isles

Ayrshire & Arran

Borders

Dumfries & Galloway

Edinburgh & The Lothians

Greater Glasgow & Clyde Valley

Highlands and Western Isles

Loch Lomond, Stirling & The Trossachs

Tayside

Closed Pubs

More to Try

Protecting Heritage Pubs Through Listing

Introduction

This guide describes the 116 pubs identified by CAMRA as having interiors of national or regional historic or architectural importance, plus a further 24 whose interiors are of some regional interest.

Scotland has over 4000 pubs so why do only 3% of them make the grade for this publication? Simply put, the last forty years or so has seen a huge amount of change to the country's pub stock. Many interiors have been modernised, often involving opening out of what were previously multi-roomed layouts and the removal of original fabric and features. This mania for destruction has, happily, abated somewhat as appreciation of what is genuinely old has increased but in most cases the damage has been done. This makes safeguarding what remains of our pub heritage a serious conservation challenge and, by publishing this guide, we aim to encourage owners and Councils to take steps to ensure the protection of these priceless assets. We also hope that the guide will stimulate increased interest in our historic pubs and encourage more people to use them – because the other major threat is that pubs may be lost altogether as changing

social habits and other factors lead to more and more closures.

The National Inventory

Defending our traditional pubs has always been a key aim of CAMRA. Work to compile a National Inventory of Historic Pub Interiors (NI) began in 1991 and the first actual list appeared in 1997, totalling 179 entries. It has since been continually refined and updated as, on the one hand, new candidates were discovered and, on the other, existing entries were closed or ruined. The total currently stands at 284, of which 30 are in Scotland. There are two key criteria for inclusion. Firstly, the interior is largely unaltered since before 1945, though intact early post war pubs are also included (but are very rare). Secondly, the NI covers pubs with specific features or rooms of national significance. Our publication, Britain's Best Real Heritage Pubs, describes the entries in some detail, as do the 'long descriptions' on our website.

The Regional Inventories

These were the next logical step for us. As would be expected, the bar for inclusion is set lower than for the NI though the same principles apply, with the emphasis on the internal fabric of the pub and what is authentically old within it. 81 pubs of this standard can be found in Scotland.

A further category is pub interiors of Some Regional Interest. Although much altered, they will contain some historic features which may be of interest to visitors. 23 such pubs are briefly described in the guide.

Characteristics of Scottish Pubs

Tenements

A distinctive feature of many Scottish pubs, and something rarely seen elsewhere in the UK, is their occupation of the ground floor of tenement blocks of flats, alongside a variety of shops. Tenements are Scotland's dominant house-building style, in common with much of Europe but not the rest of Britain. These pubs often differ little from adjacent shop-fronts while pubs elsewhere in the country tend to be free-standing or part of a terrace. Most Scottish pubs don't have living accommodation for licensees because of early 20th-century legislation that banned Sunday opening.

Island Serving Counters

Before the 1880s, Scottish urban pubs had, as in the rest of the UK, a variety of small rooms serving different clienteles. Around this time, licensing magistrates in towns and cities agreed that these arrangements prevented the publican and their staff from exercising proper supervision of their customers. As a result, many pubs were remodelled between then and the early 1900s to create a spacious, often lofty, room with a large island serving counter, usually oval but sometimes in other configurations. (More recently, similar arguments prevailed elsewhere in Britain, resulting in much internal opening-out).

These serveries generally had an ornately-carved central fitting holding mainly whisky casks and sometimes other spirits. Most pubs were designed for stand-up drinking, but some sitting rooms were provided, usually at the front of the pub and well lit to meet authority approval.

This guide features several pubs with such arrangements, the finest being the Horseshoe Bar, Glasgow, with its counter in an elongated horseshoe shape some 32 metres (104 feet) in circumference. It long claimed to be the longest bar counter in the UK but a new pub in Clitheroe probably now holds the title. The Railway Tavern, Shettlestone, in east Glasgow, is the most intact pub in this style; it retains two sitting rooms and, remarkably, an intact family department (off sales).

Other notable examples are the Pittodrie Bar, Aberdeen, the Kenilworth, Edinburgh and the Phoenix, Inverness. A popular variation is the U-shaped counter protruding from a wall, as at the Market Inn, Ayr and Central Bar, Renton.

Later examples include the Prestoungrange Gothenburg, Prestonpans and, from the 1930s, the Brewers Tap, Paisley and the Portland Arms, Shettlestone. At the Railway, West Calder and the Woodside, Falkirk, the staff area is about the same size as that for drinkers. In some cases e.g. Fanny by Gaslight, Kilmarnock and the Town Arms, Selkirk, counters have been shortened to increase drinking space.

Ornate Gantries with Spirit Casks

From the 1890s, some pubs were refitted with a straight bar counter and an ornately carved fitting behind known as a ‘gantry’ (deriving from ‘gantress’, an old Scots word to describe a wooden stand for casks.). Gantries usually held polished spirit casks and were decorated with mirrored centrepieces, often advertising brewery or distillery products.

The best example of this feature is at the Old Toll Bar, Glasgow, with its two sets of four whisky casks either side of a central mirror, pediment and central clock. Other dazzling examples, complete with spirit casks, can be found at Bennet’s Bar, Edinburgh and the Volunteer Arms (Staggs), Musselburgh. Two which have lost their casks but remain impressive are at the Rowan Tree, Uddingston and (from 1926) the Grill, Aberdeen.

Just one pub remains where you can still get a ‘dram from the cask’. At the Old Wine Stores, Shotts, the blender William Morton supplied its blend in bulk until quite recently and the no.3 barrel still contains whisky but is topped up now once a fortnight by the landlord.

Sitting Rooms

Not all Scottish pubs are single spaces. Many still have separate rooms termed ‘sitting rooms’ (or ‘snugs’ when very small). These were for ‘respectable’ drinking as against the stand-up format elsewhere in the pub. Good examples are at the Steps, Glasgow, the Clep, Dundee and the Portland Arms, Shettlestone (which has no less than four of them). Sometimes these rooms are designated ‘private’ as seen in the door glass at the Athletic Arms, Edinburgh – but, sadly, the room division was recently removed here.

Ladies' Room/Ladies' Snug

Scottish urban pubs were hugely male-dominated and, indeed, a handful (notably the Grill and the Bridge Bar, both in Aberdeen) stayed men-only until the 1976 Sex Discrimination Act outlawed the practice. Until recently, the Imperial, Wishaw only allowed men into the bar with women using the 'ladies' snug' near the entrance. The snug at the Ritz, Cambuslang (not in this guide) is still predominantly used by women.

Family Department

Tiny rooms, or booths, where drink was bought for consumption off the premises, survive in a few places. Customers were generally women or children, sent to collect the family supplies. Bennet's Bar, Edinburgh has an excellent example, called here the Jug and Bottle. At the Prestoungrange Gothenburg, Prestonpans, the example is termed the Jug Bar while it's the Family Department at both the Portland Arms, Shettleston and the Harbour Bar, Kirkcaldy. A very late example is that at the Laurieston Bar, Glasgow, dating from the 1960s when the off-sales habit had begun to die out.

Office

Infrequently seen nowadays are the owner's or manager's office. Still used by staff are those at the Old Toll Bar, Glasgow, with an original colourful glass panel, and at the Links Tavern, Leith. The office at the Red Lion, Kelso is accessed through bay five of the gantry while there is a modernised one within the counter of the Horseshoe Bar, Glasgow. At the Brewers Tap, Paisley, the office between the front doors has been converted to a snug.

Brewery and Whisky Mirrors

Many Scottish bars are adorned by old mirrors, usually advertising long-vanished spirits, breweries or beers, as well as soft drinks and, occasionally, tobacco products. Some, such as those at the Pittodrie Bar, Aberdeen, the Barony Bar, Edinburgh and the Old Toll Bar, Glasgow, are of truly epic proportions. Screens set at eye level in front windows were also used for advertising – good examples are at the Dalhousie, Brechin and the Woodside, Falkirk.

Bell Pushes

These can often be spotted on pub walls, especially in sitting rooms and are a reminder of the once-common practice of table service. Ringing the bell triggered a bell-box indicator visible to bar staff. Only a small number of Scottish pubs now offer the service. It is available in two rooms at the Globe, Stranraer and at the Steps Bar, Glasgow (sitting room), the Clep, Dundee (lounge) and the Railway Tavern, Kincardine (right-hand room). Customers in the smoke room of the Viceroy, Govan, Glasgow can avail themselves of table service on Saturday evenings whilst at the Village Tavern, Larkhall, a shout of 'Hoy' will secure it for some customers.

Water Taps on the Bar

Scotland is famous for whisky and, as it's the only spirit that can benefit from a little added water, water taps were a common feature on counter tops. Some survive and a few are even in working order e.g. those at Bennet's Bar and Ryrie's Bar, Edinburgh, the Buck Hotel, Langholm and the Rowan Tree, Uddingston. Ceramic jugs can be found on most bars for customers to add their own water. Some Scots say 'beer is used to wash the whisky down' which remains true in areas like the Highlands and Islands. In Glasgow, 'hauf an' a hauf pint' - a half glass of whisky and a half of beer, with the latter being the chaser – is popular.

Do you know of other pubs to include?

The entries here draw on the accumulated knowledge of CAMRA members and we hope to have identified all interiors worthy of inclusion. However, in such a big area, there may be historic examples which have escaped our notice – if you find one, please let us know. Also, please tell us if you come across significant changes to a listed interior or you become aware of a threat to one of these pubs (info@pubheritage.camra.org.uk).

Aberdeen & Grampian

Aberdeen

121 Gallowgate, Aberdeen, AB25 1BU

Tel: (01224) 647472

Website: <http://www.jazzatthebluelamp.com>

Real Ale & Cider: Real Ale

Public Transport: Near Railway Station (Aberdeen) and Bus Stop

Listed Status: Not listed

Aberdeen

6 Bridge Street, Aberdeen, AB11 6JJ

Public Transport: Near Railway Station (Aberdeen) and Bus Stop

Listed Status: Not listed

Blue Lamp ★★★

A three-storey granite building, refitted around 1960 and hardly changed since. The ground floor comprises a U-shaped room with floor to ceiling ply panelling. The counter has a panelled front and black Formica top while the gantry has a mirrored back and glass shelves. Also dating from the refit are the doors and the leatherette fixed seating in the left-hand part. The lounge is on the first floor and sports more ply panelling and a similar servery and fixed seating. In 1989, the former soap factory next door was converted to a music lounge and new ground floor toilets were installed (the lounge loos are from the 1960s). Real ale is served from a fount - a rarity these days.



Bridge Bar ★

This small, high-ceilinged single bar was a men-only bastion until the Sex Discrimination Act 1975 obliged the admission of women. Even now there is no ladies toilet because there is no room for one. The bar counter and gantry probably date back to the early 20th century and originally went round the back of the room until these parts were removed to create more customer space. The top part of the gantry is supported by Ionic columns. The panelling covering the walls is believed to be old but the date is unknown.



Aberdeen

213 Union Street, Aberdeen, AB11 6BA

Tel: (01224) 583563

Email: info@thegrillaberdeen.co.uk

Website: <http://www.thegrillaberdeen.co.uk>

Real Ale & Cider: Real Ale

Public Transport: Near Railway Station (Aberdeen) and BusStop

Listed Status: B

Grill ★★★

A beautifully appointed pub lies behind an austere exterior in an early 1830s grey granite terrace. It was a restaurant from the 1870s but was turned into a pub in the early 20th century. Having been acquired by a Mr John Innes in 1925, it was refitted the following year under architects Jenkins & Marr. This mainly stand-up bar retains its very fine fittings from that time including a wonderful long mahogany gantry with three glazed cabinets, made, like all the woodwork, by a Mr G. Fordyce of Archibalds. The counter carries the letter 'G' along its various sections and has a continuous brass match-striker from the good(!) old days of smoke-filled pubs. The walls are covered in mahogany veneer and the tables, with cast-iron bases, are inscribed with the name of the pub. The plasterwork ceilings are striking with a huge oval at the front and a circular feature at the rear, the craftsmen responsible being named as Messrs R.Watt and G. McGilvery. This was a gents-only bar until the Sex Discrimination Act came into force on 1 January 1976 and ladies' did not get their toilet until as late as 1998 when the gents' underwent a sex-change.



Interior

Aberdeen

97 King Street, Aberdeen, AB24 5AB

Listed Status: Not listed

Aberdeen

6 - 8 Little Belmont Street, Aberdeen, AB10 1JG

Tel: (01224) 644487

Website:

<http://www.belhavenpubs.co.uk/pubs/aberdeenshire/ma-camérons>

Real Ale & Cider: Real Ale

Public Transport: Near Railway Station (Aberdeen) and Bus Stop

Listed Status: Not listed

Kings Bar ★

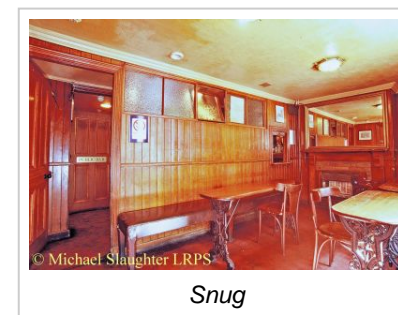
A photo on the wall shows the bar counter and gantry have been there years, possibly since the 1930s. It has a mirrored five-bay gantry with two glass-fronted cabinets and a clock on top. It all looks old but bar staff say fire damage to the lefthand side in the 1960s so it may be it is a copy or repaired in that area? The good bar counter is over 50 years old but the panelling was added in the late 1990s and the left side panels have been painted battleship grey. The ceiling has been lowered in recent years. Note the brass strips along the top of the counter which were used to light matches. There are two working brass water taps on the counter. There is a small separate lounge / darts area at the rear with new fixed seating.



Servery

Ma Cameron's ★

One of Aberdeen's oldest pubs, 'Ma's retains a couple of classic old panelled rooms. The snug has bare bench seating, a hatch for service and two perforated bentwood seats. A partition wall separates the snug from the public bar, which retains its array of old fittings. A small room on the right has been modernised and there has been a massive expansion in recent years but this doesn't impact adversely on the pair of historic rooms.



Snug

Aberdeen

339 King Street, Aberdeen, AB24 5AP

Tel: (01224) 638836

Public Transport: Near Bus Stop

Listed Status: Not listed

Aberdeen

7 St Nicholas Lane, Aberdeen, AB10 1HF

Directions: Opp Marks & Spencer and parallel to Union Street

Tel: (01224) 640597

Email: princeofwales.aberdeen@belhavenpubs.net

Website: <http://www.princeofwales-aberdeen.co.uk>

Real Ale & Cider: Real Ale

Public Transport: Near Railway Station (Aberdeen) and Bus Stop

Listed Status: C

Pittodrie Bar ★

The only pub in Aberdeen to retain its original island-style bar, which has one of the best displays of brewery and whisky mirrors in Scotland. While not visually exciting the original oval-shaped counter has a mosaic (former) spittoon trough all around the base, which is rare, and a match-striker running just under the top. The island gantry has been replaced in recent years but is similar in design to the original. There are six large and two small mirrors on the walls including a splendid one for Robert Younger's St Ann's Brewery by T J Ford of Edinburgh. A small sitting room was lost in the 1960s by the removal of a short glazed partition on the left. The pub is very busy when football is screened.



Bar

Prince of Wales ★

This late-Victorian granite pub has two carved back gantries and at 18 m (60 ft) the longest bar counter for miles around. Originally it consisted only of the right-hand half of the present-day pub, but, in the 1980s, numbers 9 and 11 to the left were purchased and areas at the front left and rear left created. The long counter has an old spittoon trough around the base with new tiles and the bar top has been replaced. Good collection of brewery and whisky mirrors.



Bar

Craigellachie

, Craigellachie, AB38 9RR
Tel: 07841 357637
Email: info@thefiddichside.com
Website: <https://www.thefiddichside.com>
Listed Status: C

Fiddichside Inn ★★★

UPDATE 2020.

A refurbishment has recently been carried out which requires a re-assessment.

Please note - the photos are therefore out of date and the description is one written before the recent changes.

A marvellous rural survival; a tiny bar at the end of a cottage in a beautiful spot by a bridge over the River Fiddich. The pub has been in the owner's family for 88 years. The public bar measures about 10 ft. x 15 ft. with a panelled original counter running down the length of the room and leaving only half of the space for customers. There is not enough room for any tables, only bar stools and a couple of benches. The back gantry is a simple three-bay affair and there is half-height wooden panelling on the walls. Opposite the counter is a coal fire and there are antique William Younger's and Robert Younger's IPA mirrors. That's it - no carpets, no food, no fruit machines, no piped music, no TV, no children - absolute heaven for lovers of unspoilt pubs.



Public Bar

Stonehaven

9-10 Shorehead, Stonehaven, AB39 2JY
Directions: Overlooking harbour
Tel: (01569) 762155
Email: marine@sixdnorth.co.uk
Website: <http://www.marinehotelstonehaven.co.uk>
Real Ale & Cider: Real Ale
Public Transport: Near Railway Station (Stonehaven) and Bus Stop
Listed Status: C

Marine Hotel ★

Although opened up, the pub retains many fittings in the left-hand part - old bar counter with console brackets, three bay bar back with columns holding up the shelves and an old curved bench. The full-height panelling has mostly been painted grey or red.



Servery

Argyll & The Isles

Kilmelford

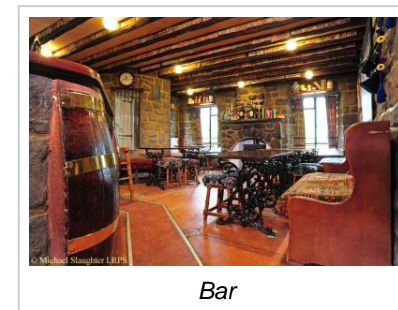
, Kilmelford, PA34 4XA
Tel: (01852) 200274
Email: mail@cuilfail.com
Website: <http://www.cuilfail.co.uk>
Real Ale & Cider: Real Ale
Public Transport: Near Bus Stop
Listed Status: Not listed

Oban

35 Combie Street, Oban, PA34 4HS
Tel: (01631) 561253
Public Transport: Near Railway Station (Oban) and Bus Stop
Listed Status: Not listed

Cuilfail ★★★

The main part of the hotel dates from the 1870s and was added on to an old drovers' inn, the rather extraordinary interior of which is of interest here. It was refashioned in 1957 (date on the fireplace) and is a now-rare example of the kind of theming that was then so popular. In this case the theme is rugged stonework. But beware! The only real stones are around the fireplace. The rest is fake, created by applied concrete, painted to look convincingly rustic. The 'stone'-faced counter also incorporates segments of imitation brass-strapped whisky casks and the gantry also features similar work. There's a quadrant-shaped screen at the entrance with a Perspex centre amid the 'stones'. The flooring is of terrazzo and the Critall windows have coloured glass panes. In the rear alcove a door leads to the former games room, now a kitchen. On the hotel side there is a short passage with dado panelling (again of 1957? and repeated in the hotel reception area) and an arch leading to a small tiny snug. Its hatch to the servery is now blocked. There are plans to restart on-site brewing (it ceased in 2010). 'Cuilfail' (pronounced 'cool-fail') means 'sheltered corner' in Gaelic.



Bar

Lochavullin ★

In a Victorian terrace leading out of town, this pub was refitted in very economical style about 1960 and this work, remarkably, remains intact. Facing the front door is an off-sales opening with a pair of tiny doors and to the right is the public bar. This has ply panelling to the walls, exposed joists in the ceiling and a plain ply bar counter. The rather smaller lounge on the left has its own plain ply counter (but with panels of red upholstery) and plastered walls.



Left-Hand Side Bar

Rothesay

3 East Princes Street, Rothesay, PA20 9DL

Tel: (01700) 502095

Real Ale & Cider: Real Ale

Public Transport: Near Bus Stop

Listed Status: B

Rothesay

14-18 Castlehill Street, Rothesay, PA20 0DA

Tel: (01700) 502417

Email: katieross4807@gmail.com

Listed Status: Not listed

Golfers' Bar ★★

This drinkers' pub, which occupies the ground floor of a tenement built in 1901, still retains most of its refitting from c.1930 in Glasgow Art Nouveau style. The public bar has an impressive mirrored gantry with stained glass cupboard fronts and ten drawers, a long bar counter and extensive panelling. At the front there is a snug accessed via sliding doors with etched windows and partition walls. Around the public bar, just below the floral frieze, there are a series of painted plans depicting all the holes at Rothesay golf course.

The pub is situated close to the ferry terminal, where you will find the most impressive surviving late-Victorian gents public toilets in the UK.

Macs Bar ★★

A three-storey stone building, this pub has been in the same family since 1951 and was refitted just after that date. The left hand public bar and off sales are unchanged since.

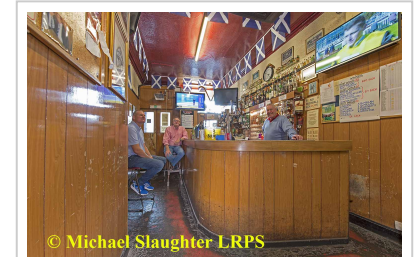
The left-hand exterior door leads into a lobby with a door on the left to the off sales which has a dado of ply panelling and a surviving 1950s bar counter (minus its flap).

The public bar is ply panelled to two-thirds height and lino floored. The L-shaped bar counter, which curves at the right-hand end, has a ply panelled front and a (replacement)Formica top. The gantry sports glass shelves on a very 1950/60s mirror mosaic and red Formica lower shelving. Look for the gas heater over the inner door which is still used in winter.

The right-hand exterior door leads to the lounge with pool and darts. This was a store until converted in the 1980s.



Snug



Public Bar

Ayrshire & Arran

Ayr

2 Castlehill Road, Ayr, KA7 2HT

Tel: (01292) 280391

Listed Status: C

Market Inn ★

This late 19th century building was saved from demolition by a local action group, which included the Ayrshire branch of CAMRA, when the surrounding area was redeveloped c.1999. A popular drinker's pub, it still has many fittings from c.1900, and is one of a handful with an original horseshoe-shaped counter still with the old terrazzo spittoon trough around the base, which, unusually, has a drain. At the rear right where the terrazzo trough finishes, the counter has been turned through 90 degrees to create more space for customers.



Servery

Dalry

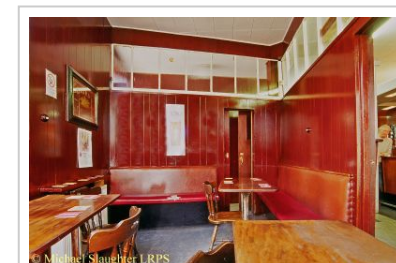
28-30 Main Street, Dalry, KA24 5DH

Tel: (01294) 832394

Listed Status: C

Volunteer Arms ★★★

Built in 1870, this pub has never sold spirits via optics - all are served from the bottle into measures. It has been in the same family for 118 years, the present owner's grandfather owned the pub from 1905. The present owner, Liam McDermott, took over from his father in 1974. The interior is very little changed since refits in 1958 and 1960 and is therefore a rare survivor. The public bar was last refitted in 1958 when a snug at the rear of the bar was removed and the original half-moon bar counter was replaced. The present counter has a slatted vertical timber front, behind which is a simple shelved timber gantry. On the left side of the public bar are two small snugs created by floor to ceiling wooden partition walls with high level glass panels and linked to the passage by sliding doors. These have leatherette fixed seating and bell-pushes but the panelling on the walls was renewed in the 1990s. The bell-pushes are still working - each snug and the passage off-sales bell has a different pitch so the staff know which is which and some table service still occurs at least daily. At the rear is an intact lounge created in 1960; this has a counter with ply-panelled front, a mirrored gantry, fixed seating, and two tiled fireplaces with timber mantels.



Front Snug

Millport: Isle of Cumbrae

36 Glasgow Street, Millport: Isle of Cumbrae, KA28 0DL

Tel: (01475) 530465

Listed Status: Not listed

Tavern ★

This small locals' pub was built in 1895 and despite its modern exterior, it retains its original fittings and old brewery mirrors, but lost its off sales on the front left hand side in about 1970. The decorative bar counter with coat hooks and a spittoon trough around its base looks original; and much of the gantry shelving also looks original; but some of the lower shelves have been lost to fridges. The whole room, including behind the gantry, has floor to ceiling panelling painted cream. There are several fine old mirrors. A modern lounge at the back.



Servery

Borders

Ancrum

The Green, Ancrum, TD8 6XH

Directions: on B6400, off A68

Tel: (01835) 830242

Email: crosskeysdining@gmail.com

Website: <http://www.ancrumcrosskeys.com>

Real Ale & Cider: Real Ale

Public Transport: Near Bus Stop

Listed Status: C

Ancrum Cross Keys ★

Village pub built c.1850 of red sandstone and retaining much of its 1906 refurbishment by Jedburgh Brewery. The passage through the pub has 'Bar' etched panels on the inner doors and a hatch, which was originally for off-sales. The small public bar on the right with a sliding door retains its Edwardian interior fittings of back gantry, original counter (bar top is new) and tiled fireplace. The fixed seating is probably 40 years old. Beyond this is a small dado panelled room with an original fireplace and mirrored overmantel, but the bar counter and fixed seating are modern additions. The rear two rooms have been brought into use and the only item of interest is the overhead 'tram lines' used for moving heavy casks as this was the original cellar.



Public Bar

Coldstream

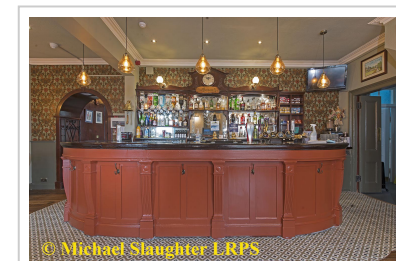
75-77 High St., Coldstream, TD12 4AE
Tel: (01890) 882154
Email: besominn@outlook.com
Real Ale & Cider: Real Ale
Public Transport: Near Bus Stop
Listed Status: C

Besom ★

Grade C listed in 2008, but sadly, in 2020, Scottish Borders Council agreed to the owner's request to remove the wall that separated the public bar on the right from the smoke room on the left. The counter in the right hand 'bar' side was carefully extended to the left by about a third in the now combined room to make it look like the whole counter dates from 1910; the left hand smoke room was originally served by a hatch.

The fine 1910 three bay gantry remains with its integral clock and three etched mirrors partially covered by shelves held up by slender columns; the detail on the central one is of crossed brooms (besoms) and thistles. The counter front has been painted in a light rust colour. The Council insisted on the retention of the small lobby and its inner doors with etched glass bearing words 'Bar' (right) and 'Smoke Room' (left).

The pub was extended to the rear in 1954, and through a wooden archway on the rear left is a room with full-height ply panelling, a number of bell-pushes around it, and Coldstream Guards memorabilia. To the right there is a small separate room brought into use that is now a dining room.



Bar

Hawick

1 Silver St., Hawick, TD9 0AD
Directions: off SW end of High St.
Tel: (01450) 376067
Real Ale & Cider: Real Ale
Public Transport: Near Bus Stop
Listed Status: C

Exchange Bar [Dalton's] ★

A mid 19c three-storey tenement building where the Hawick Co-Op opened a store in 1839, but it became the Exchange Bar in 1885. The most impressive interior feature is the very ornate cornice, there are good ceiling roses and the large single room has floor to ceiling panelling. From the 1960s to the 1980s the panelling was covered by plasterboard and wallpaper. It's thought that the bar counter dates from the 1880s, and lower shelves of the gantry are old. Two former snugs have now been removed.



Interior 2

Hawick

32 High Street, Hawick, TD9
9EH
Tel: (01450) 367456
Listed Status: Delisted

Queens Head



Jedburgh

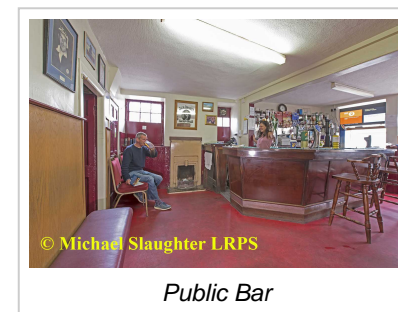
52 High St., Jedburgh, TD8 6DQ
Tel: (01835) 862237
Listed Status: Not listed

Oxton

3 Main St, Oxton, TD2 6PN
Tel: (01578) 750758
Email: thetoweroxton@outlook.com
Website: <https://www.toweroxton.co.uk>
Listed Status: Not listed

Railway Tavern ★★

Although lacking fittings of quality, this small three-roomed basic locals' boozer is a throwback to the early 1960s. A sliding door leads into the bar on the right with a Formica fronted counter (the top was replaced in early 1980s) and simple mirror back gantry with Formica shelves below. There is a small 1930s cast-iron fireplace with Art Deco detailing, a dado of ply panelling and leatherette-covered wall benches. There is a little used, tiny, ply-panelled lounge with leatherette seating on the left. An upstairs bar has a bar counter installed in 1980s, replacing a hatch. The brick fireplace, leatherette seating and tables all date from the early 1960s.



Public Bar

Tower Hotel ★

A small hotel built 1903 in typical Edwardian-style, with an angular corner tower. The public bar is still intact, retaining its simple counter and plain, four-bay gantry with large areas of mirrors and several drawers for cash and small items. Features include a vestibule entrance, stained and leaded pictorial front windows, contemporary fireplace and half-height panelling with vertical moulding. The lounge and dining room have no old fittings. Update 2024 : the pub re-opened in June 2024 after being closed for five years. Thankfully, the historic features in the bar have been retained. There has been a general (and much-needed) spicing up and a new ceiling with mirrored panels has been installed.



Servery

Peebles

Portbrae, Peebles, EH45 8AW

Directions: W end of centre

Tel: (01721) 720589

Email: bridgeinn@kingdomtaverns.co.uk

Website: <https://www.thebridgeinnpeebles.co.uk>

Real Ale & Cider: Real Ale

Public Transport: Near Bus Stop

Listed Status: B

Bridge Inn [Trust] ★

An old pub rebuilt in 1900 in connection with the rebuilding of the adjacent River Tweed bridge. The exterior has prominent timbered gables. The large main room retains an old bar-counter possibly from inter-war times with two old water taps (one still used) but a modern bar-top. The bar-gantry with small drawers is also possibly inter-war; the pedimented top section (above the mirrors) is an addition of c.2000. The intact Gents' toilets have Twyfords Adamant urinals, sink and taps; also glazed brick walls to two-thirds height and quarry-tiled floor.



Servery

Dumfries & Galloway

Annan

10 High Street, Annan, DG12 6AG

Tel: (01461) 202385

Real Ale & Cider: Real Ale and Real Cider

Public Transport: Near Railway Station (Annan) and Bus Stop

Listed Status: C

Bluebell Inn ★

In 1917 all the pubs in Annan became part of the Gretna State Management Scheme, one of a handful of such schemes in the UK, and they continued to be owned by the government until 1972. The idea was to control the consumption of alcohol by workers in the munitions factories at Gretna and, under the scheme, the Blue Bell was refitted and is not much changed since. This former coaching inn, where Hans Christian Anderson is said to have stayed, dates back to 1770, but the red sandstone building is now mainly mid 19th-century, although it still retains its stables at the rear. The main change in the last 50 years has been the removal of a sliding screen on the left of the entrance which gives the pub an open-plan feel. All the walls are covered in inter-war panelling, as is the bar counter, but the counter top and back gantry have been replaced in the past 30-odd years. There was a tiny snug on the right-hand side until the 1970s. A short flight of steps to the left of the bar leads to the adjacent pool room. This was formerly part of the living accommodation and there is nothing of historic interest. The gents' is intact with its panelled ante-room, tiled inner room and original Shanks urinals.



Bar

Dumfries

56 High Street, Dumfries, DG1 2JA

Tel: (013873) 23010

Email: mail@globeinndumfries.co.uk

Website: <https://www.globeinndumfries.co.uk/>

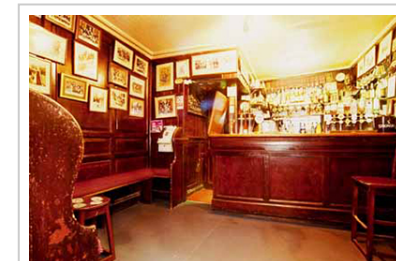
Real Ale & Cider: Real Ale

Public Transport: Near Railway Station (Dumfries) and Bus Stop

Listed Status: A

Globe Inn (High St) ★★

Dumfries is famous for its connections with Scotland's patriot bard Robert Burns, and the Globe Inn is known as the Burns Howff i.e. his favourite pub. This mid 18th-century brick building is situated down a narrow wynd (alley) off the High Street. Opposite the entrance is a sliding door that leads into the old wood panelled snug bar, created by wooden partition walls with wall bench seating attached. The snug retains its old back gantry of shelves on a tongue-and-grooved walls and bar counter. At the front of the pub are two small 18th-century panelled rooms brought into use as dining rooms in recent years. The Burns bedroom upstairs has etchings on two windowpanes that have been authenticated as being written by Burns.



Snug

Dumfries

97 St Michael Street, Dumfries, DG1 2PY

Tel: (01387) 270764

Email: theshipinndumfries@outlook.com

Public Transport: Near Railway Station (Dumfries) and Bus Stop

Listed Status: Not listed

Ship Inn ★

UPDATE 2020.

A refurbishment has recently been carried out which requires a re-assessment.

Please note - the photos are therefore out of date and the description is one written before the recent changes.

Situated opposite St Michael's churchyard, where you will find Burns' mausoleum, is this small two-roomed pub that has been little altered in 40 years. It was converted from an early Victorian house into a two-roomed pub with snugs in c.1900. A vestibule entrance leads into the small public bar, which has an original mirrored back gantry with a modern top section. The original bar counter has a panelled frontage probably added in the 1960s and a new top. Prior to 1960s there was a row of three small snugs down the left side and another on the front right. Horizontal panelled walls, now painted white, probably date from the 1960s.



Bar

Dumfries

48 Lovers Walk, Dumfries, DG1 1LX

Tel: (01387) 247878

Public Transport: Near Railway Station (Dumfries) and Bus Stop

Listed Status: Not listed

Langholm

High Street, Langholm, DG13 0JH

Listed Status: C

Waverley Bar ★

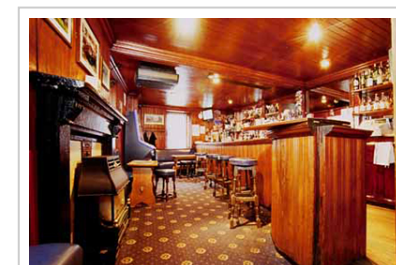
Public bar has a curved ply panelled bar counter from the inter-war years and with a trough all along its base. The gantry is more 1960s or later with glass shelves. The walls have 1960s ply panelling throughout to picture frame height. There is a 1930s (or 1950s?) brick fireplace on the right painted red. The fixed seating looks 1960, as do the draught baffles with a 'W' motif. There is a series of Art Deco style wall lights which look old. Gents' with half doors has 1930s Shanks & Co. Barrhead urinals. An arch at the rear right leads to a smallroom / snug with some more 1960s ply panelled walls and modern fixed seating.



Public Bar

Buck Hotel ★

Mid 18th-century small hotel that has been modernised but retains its narrow public bar with two old back gantries. On the left the gantry has a mirrored back and two narrow mirror strips while the one on the right has slender supports and holds 50 single malt whiskies. The bar counter with two sets of disused beer engine handles and a working water tap is at least 50 years old and curves in front of the right gantry. Other old features include the panelled walls and ceiling, a 100-year-old cast-iron and glazed brick fireplace but the seating is modern. The front door leads into a Victorian tiled hallway with an old bell-box and a hatch for service. The sitting room at the rear was converted to a lounge in the early 1970s and on the left is a modernised games room, which was formerly two small rooms.



Bar

Moniaive

High Street, Moniaive, DG3 4HN
Tel: (01848) 200017
Email: thegeorgedg34hn@gmail.com
Listed Status: B

Stranraer

4-6 Bridge Street, Stranraer, DG9 7HY
Tel: (01776) 703386
Email: gingerexplosion@yahoo.com
Real Ale & Cider: Real Ale
Public Transport: Near Railway Station (Stranraer Harbour) and
Bus Stop
Listed Status: C

George Hotel ★

A traditional family-run pub occupying an early to mid-18th century building with a Victorian single-storey extension. The main interest lies in two rooms refitted in the late 1940s and little altered since. The small public bar is the better of the two. It has a very old counter to which panels were added after a flood in the early 1960s. The gantry has changed little since the 1940s refit and its unusual lower part is said to have come from a church. In the beam above the old stone fireplace is the 'Tramp's Hole' where once upon a time coins were placed so that vagrants could be bought a drink. A panelled dado with old benches attached runs round the room and the flagstone floor has apparently been turned over in recent years. The room beyond is plainer though it also has an old counter with more recent panelling plus simple bar-back shelving and some 1960s work around the walls. The extension currently operates as a cafe.



Grapes ★★

Town centre pub little altered in 50 years and now coming up again after years of decline. Originally a coaching inn, the present building was erected in 1862 and still has the former stables at the rear. The mainly stand-up bar has a gantry at least 100 years old incorporating a brewery mirror, a 1950s bar counter front with a new top, tongue-and-groove panelled walls and old fixed seating. Upstairs the lounge with '6' on the door has a 1930s Art Deco gantry and counter that came from a hotel in Ayr in the 1950s.



Bar and Bell Box

Edinburgh & The Lothians

Broxburn

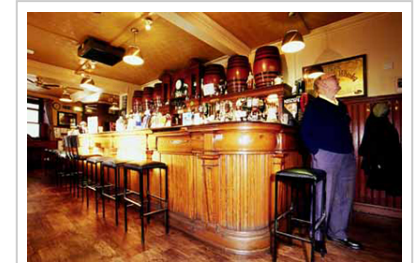
7 Station Road, Broxburn, EH52 5QF

Tel: (01506) 856347

Listed Status: Not listed

Masonic Arms ★

A late 1890s corner pub that consists of a long, narrow stand-up bar with a five-bay back gantry holding six spirit casks. The public bar, which is likely to have been divided by a partition in the past, retains its fine original bar counter. Half-height panelling features throughout along with etched window screens, one inscribed 'T. Bain Masonic Arms'; and an old Usher's Pale Ale' mirror. The vestibule has 'Bar' etched in the door panel. Through a large archway at the rear is a games room, previously two rooms.



Public Bar

Edinburgh

3-5 Rose St., Edinburgh, EH2 2PR

Directions: city centre

Tel: (0131) 225 5276

Email: enquiries@theabbotsford.com

Website: <https://theabbotsford.com>

Real Ale & Cider: Real Ale

Public Transport: Near Railway Station (Edinburgh Waverley)
and Bus Stop

Listed Status: B

Abbotsford Bar & Restaurant ★★★

The Abbotsford was built in 1902 to designs by one of Edinburgh's most prolific pub architects, Peter Lyle Henderson, for Charles Jenner of Edinburgh's famous department store and features one of the finest examples of the typically Scottish island-style servery. Unusually there is no gantry in the middle, which no doubt explains the mahogany superstructure on top of the counter. Although such features, normally designed to hold pot-shelves, are now very common in pubs, they are usually no older than the 1960s and this example is a very early and ornate precursor of the type. The panelled walls have inlaid mirrors and there is a richly decorated high plaster ceiling. In the far left corner is the original snack counter, with a fine balustraded and mirrored gantry and various drawers. On the back wall opposite Rose Street is an annunciator box, which indicates that at one time (in addition to the main bar) there were a dining room, a private room and a smoking room. Alterations took place in the 1970s when the first floor was acquired for pub use and a staircase inserted. The Abbotsford is one of a handful of pubs in Edinburgh still using the traditional Scottish method of dispense – the tall fount (the 'u' is silent) – to dispense its range of real ales.



Island Bar Interior

Edinburgh

1-3 Angle Park Terrace, Edinburgh, EH11 2JX

Directions: 1.5m SW of centre

Tel: (0131) 259 9948

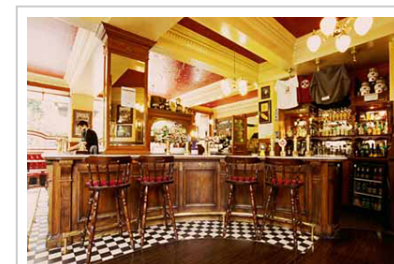
Real Ale & Cider: Real Ale

Public Transport: Near Bus Stop

Listed Status: C

Athletic Arms [Diggers] ★★

Though some regard the Diggers as a shadow of its former self, the basic layout is largely unchanged since Scottish & Newcastle bought it in the 1990s. The main changes have been a new bar counter and top and removal of the partitions which formed the separate jug bar and private bar. A solid wooden screen has also gone from the top of the bar counter, along with three tall fonts. Original features include the back gantry of sturdy, well-carved wood, the small, oak island gantry and the screened Publican's Office area. Away to the right, separated by a glazed screen, is a small back room with tongue-and-groove timber dado and brass service bells. This is one of only a handful of city pubs always to have sold real ale and was renowned for serving McEwan's 80% at lightning speed by up to 15 red-jacketed barmen. In the past, customers would raise their fingers on entering to show how many pints they wanted and they would be on the bar by the time they reached it.



Bar

Edinburgh

81-85 Broughton Street, Edinburgh, EH1 3RJ

Directions: E edge of New Town

Tel: (0131) 629 9204

Email: info@thebarony.co.uk

Website: <https://www.baronybar.com>

Real Ale & Cider: Real Ale and Real Cider

Public Transport: Near Railway Station (Edinburgh Waverley)
and Bus Stop

Listed Status: B

Barony Bar ★★★

A relatively small L-shaped, single-bar pub with a luscious interior. Located in an 1804 four-storey tenement, it wraps around a florist's shop on the street corner and has an attractive teak frontage. The interior is notable for its 1899 decorative scheme by John Forrester. The multi-coloured tiled dado includes small pictorial panels of rural Scottish scenes (sadly, mostly hidden by seating – why were they placed so low? – this must always have been a problem). The counter, ornate gantry and two tiled fireplaces (with mirrored overmantels) are all from the late Victorian scheme. As with so many historic Scottish pubs, there are advertising mirrors, in this case a massive pair proclaiming McLaughlan Bros' wares and also, around the corner, one promoting William Younger's India Pale Ale. Originally, the right-hand front door led to a jug and bottle, and there were a couple of snugs at the rear.



Interior 1

Edinburgh

8 Leven Street, Edinburgh, EH3 9LG
Directions: 0.8m SW of centre
Tel: (0131) 229 5143
Email: info@bennetsbaredinburgh.co.uk
Website: <https://kilderkingroup.co.uk/bennets>
Real Ale & Cider: Real Ale
Public Transport: Near Bus Stop
Listed Status: B

Edinburgh

2-4 Bath Road, Edinburgh, EH6 7JT
Tel: (0131) 259 1350
Email: manager@thebullfinch.co.uk
Website: <https://www.thebullfinch.co.uk>
Listed Status: Not listed

Bennets Bar ★★★

Edinburgh's finest historic pub interior after the Café Royal. The pub was designed in 1891 by architect George Lyle and refitted in 1906. The main bar stretches back from the street and down the left-hand side is the servery, with a flamboyant five-bay gantry housing four spirit casks, the last to survive in an Edinburgh pub: the counter top has two still-functioning water dispensers while at the base is a marble spittoon trough. On the right, above the seating, is a four-bay mirrored and arcaded feature with tilework populated by cherubs and figures in classical dress (painted by W.B. Simpson & Sons of London). A particular delight, to the left as you enter, is a tiny snug with a hatch and a door into the servery. The glasswork is varied and interesting, such as the swirly Art Nouveau windows to the street, and door panel advertisements offering the blandishments of Jenkinson's beers and aerated waters, not to mention Jeffrey's lager. At the end of the bar, an enormous mirror advertises Bernard's IPA. There have been changes at the rear, such as the loss of a small office at the end of the counter in 2002. At the rear right is the Green Room, added in 1906 (but modern fittings apart from, probably, the counter) and accessed from Valleyfield Street.



Bullfinch ★

A basic pub near the dock gates, retaining an imposing old gantry. This has three bays with a staff door in the middle, impressive columns holding up the top section and surviving lower shelving on the left-hand side, with three drawers attached to the main shelf. The curved bar counter looks old but is not original. Walls are panelled to two-thirds height and the cornice and ceiling roses are attractive. The vestibule areas are also notable and the one on the right may once have been an off-sales.



Edinburgh

19 West Register Street, Edinburgh, EH2 2AA

Directions: off E end of Princes St.

Tel: (0131) 556 1884

Email: info@caferoyaledinburgh.com

Website: <https://www.caferoyaledinburgh.com>

Real Ale & Cider: Real Ale

Public Transport: Near Railway Station (Edinburgh Waverley) and Bus Stop

Listed Status: A

Cafe Royal ★★★

This famous Edinburgh pub has a truly stunning interior. The building, by architect Robert Paterson, dates from 1861 and opened as a showroom for gas and sanitary fittings, but by 1863 had become the Café Royal Hotel. From the 1890s major alterations took place and much of what we see dates from 1900–1. The main space has six wonderful tiled paintings made by Doultons, designed by John Eyre and painted by Katherine Sturgeon and W. J. W. Nunn: they show six famous inventors; Benjamin Franklin, Michael Faraday, Robert Peel (calico printing), William Caxton, George Stephenson and James Watt (with Matthew Boulton). The counter was replaced in 1979 and a new tall gantry was installed in 2002. The fixed seating takes the form of a series of semi-circular areas against the outside walls. Beyond an ornate screen lies the up-market restaurant with more tiled murals plus eight stained-glass windows of British sportsmen, made by Ballantine & Gardiner of Edinburgh. It has a counter with small tiled panels and a mottled red marble counter: note also a revolving door from the 1920s.



Interior

Edinburgh

4 South College St., Edinburgh, EH8 9AA

Directions: Off Nicholson St

Tel: None

Email: CaptainsEdinburgh@hotmail.com

Website: <http://captainsedinburgh.webs.com>

Real Ale & Cider: Real Ale

Public Transport: Near Railway Station (Edinburgh Waverley) and Bus Stop

Listed Status: B

Captain's Bar ★

A small, basic but friendly drinkers' pub situated in a five-storey c1790 tenement block. The long narrow bar has old dado panelled walls, a fine 'James Gray whiskies' mirror and the original back gantry, running the length of the room with an odd kink in the middle.. The original full-length counter was replaced by a much shorter one in the 1960/1970s and has two water taps that still work but are not used. At the front right is a small snug area that was originally separate with its own entrance door.



Bar

Edinburgh

Leith Walk, Edinburgh, EH6 8LN

Tel: (0131) 555 2006

Listed Status: A

Central Bar ★★★

A down-to-earth drinkers' pub at the foot of Leith Walk which has one of Scotland's most stunning interiors. It was built in 1899 to designs by one of Scotland's leading pub architects, Peter Lyle Henderson. This tall, nearly square space started life as the bar for Leith's long-gone Central Station (closed 1972: see [The Station Buffet, Stalybridge](#) and [The Station Buffet, Bridlington](#) for historic English station buffets). Either side are entrance porches (with mosaic flooring and stained glass windows), leading into a room in which the walls are completely covered with Minton Hollins tiles. The side walls are notable for four tiled panels of sporting scenes – yacht racing, hare-coursing, golf and shooting – with tall, narrow mirrors between. The U-shaped counter backs on to a stunning oak gantry which has glazed cupboards for cigars etc, and sprouts the figures of four griffins. In the middle of the servery there is the base of a small island gantry. On the left are four U-shaped seating areas. The ceiling is papier-maché with Jacobean detailing. Window screens with coloured glass bear the name of John Doig who was the first proprietor. At the back there were originally two sitting rooms but they are now converted to storage areas. Listing upgraded to A in 2008 as a result of survey work by CAMRA.



Island Bar Interior

Edinburgh

142 Dundas Street, Edinburgh, EH3 5DQ
Directions: N edge of New Town
Tel: (0131) 556 6677
Real Ale & Cider: Real Ale
Public Transport: Near Bus Stop
Listed Status: Not listed

Edinburgh

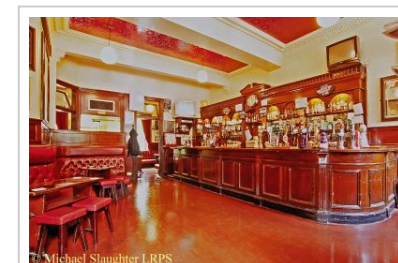
435 Lawnmarket, Edinburgh, EH1 2NT
Directions: city centre
Tel: (0131) 225 6531
Email: deaconbrodies@nicholsonspubs.com
Website:
<https://www.nicholsonspubs.co.uk/restaurants/scotlandandnorthernireland/deaconbrodiestavernroyalmileedinburgh>
Real Ale & Cider: Real Ale
Public Transport: Near Railway Station (Edinburgh Waverley) and Bus Stop
Listed Status: A

Edinburgh

26-28 Shandwick Place, Edinburgh, EH2 4RT
Directions: W side of centre
Tel: (0131) 226 4579
Email: 7204@greeneking.co.uk
Website:
<https://www.belhavenpubs.co.uk/pubs/midlothian/grosvenor>
Real Ale & Cider: Real Ale
Public Transport: Near Railway Station (Haymarket (Edinburgh)) and Bus Stop
Listed Status: C

Clark's Bar ★

In the base of a tenement, this basic bar, converted from a shop in 1899, has a high ceiling, good cornices and old dado panelling. Originally the bar counter was circular but changes in the 1960s saw the gantry moved to the right-hand wall and the current bar counter installed. The gantry was subsequently replaced in 1990. A number of mirrors, some of them old, adorn the walls. The two small wood-panelled sitting rooms have seating probably dating from the 1960s, as well as bell-pushes.



Servery

Deacon Brodies Tavern ★

Although this famous pub of 1894 has been much altered inside, it retains its mirrored timber gantry and pilastered bar counter. Note also the two early 19th century engravings and the ornate painted ceiling, exposed during renovations in the 1980s.



Bar

Grosvenor ★

The splendidly ornamental and elaborate seven-bay gantry and long panelled bar counter in the former Buffet Bar date from a quality refit in 1903.; both edifices display considerable panache. The moulded ceiling and decorative cornice add to the attractions.



Servery 1

Edinburgh

1 West Register St., Edinburgh, EH2 2AA

Directions: off E end of Princes St.

Tel: (0131) 556 4312

Email: guildfordarms@dmstewart.com

Website: <http://www.guildfordarms.com>

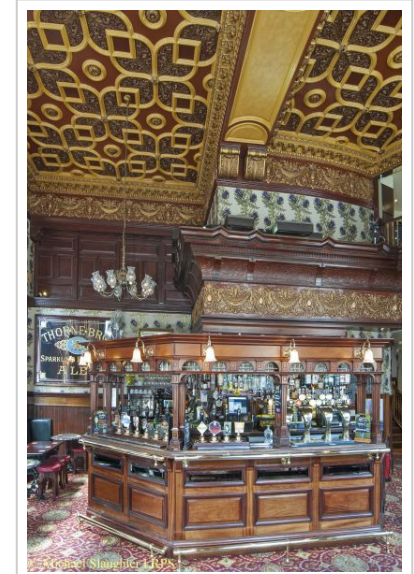
Real Ale & Cider: Real Ale and Real Cider

Public Transport: Near Railway Station (Edinburgh Waverley)
and Bus Stop

Listed Status: B

Guildford Arms ★

Most of the grand interior dates from the 1896 opening and is a fine example of Victorian rococo - best viewed from the gallery above the main bar. The deep-etched windows are still largely intact as is the revolving door. The ornate island counter is, though, a 1970 replacement.



Severy

Edinburgh

1 Queensferry Street, Edinburgh, EH2 4PA

Directions: off west end of Princes St.

Tel: (0131) 225 3549

Real Ale & Cider: Real Ale

Public Transport: Near Railway Station (Haymarket) and Bus Stop

Listed Status: B

H. P. Mather [Mathers West End] ★★★

This high-ceilinged, single-room pub is little changed in over 100 years. It is on the ground floor of a five-storey building, designed in 1900 by Sydney Mitchell & Wilson for the National Commercial Bank of Scotland and the Caledonian United Services Club. The wine merchant Hugh Mather took over and established the licensed premises in 1902. In the porch there is floor-to-ceiling tiling and, within the pub itself, the counter is original (but new top) as are the half-height panelling, ceiling and rich frieze. The great feature is the towering gantry: its central parts are original although the side portions have been added later, but it is not easy to spot the joins! This was perhaps in 1956 when plans were drawn up to remove a small snug in the rear left-hand corner. The walls are adorned by a number of old brewery mirrors. A change in the 1960s relocated the ladies' toilet from the rear right corner to downstairs. An old water engine which dispensed beer by air pressure is still in existence and may be viewed on request.



Bar Counter and Gantry

Edinburgh

42 Bernard Street, Edinburgh, EH6 6PR

Directions: 2m N of centre

Tel: (0131) 554 4122

Email: info@carriersquarters.co.uk

Website: <https://carriersquarters.co.uk>

Real Ale & Cider: Real Ale

Public Transport: Near Bus Stop

Listed Status: B

★ Henry Hall's Carriers Quarters



Servery

Edinburgh

45-47 Ratcliffe Terrace, Edinburgh, EH9 1SU

Directions: 1.5m S of centre.

Tel: (0131) 667 7205

Email: info@johnlesliesbar.co.uk

Real Ale & Cider: Real Ale

Public Transport: Near Bus Stop

Listed Status: B

John Leslie [Leslie's Bar] ★★★

A magnificent pub of 1899 set in a tenement and the work of architect P. L. Henderson. Immediately on the left on entering is a small snug, separated from the lounge by a low panelled screen with semi-circular stained glass panels. However, the unique feature at Leslie's is the gantry-like structure on the left-hand side of the servery, with its series of small ticket booth-style windows for service into the lounge. This arrangement is akin to snob screens in Victorian pubs in English cities which allowed customers a sense of privacy. At the far end of the counter is an elegant mahogany gantry with display cabinets. Other original features include an ornate plaster cornice and decorative ceiling. The dado panelling is said to have come from a neighbouring house during a restoration in 1958. At the rear of the lounge is another snug, also of 1958.



© Michael Slaughter LRPS

Right-hand side of the Island Bar

Edinburgh

152-154 Rose Street, Edinburgh, EH2 3JD

Directions: city centre

Tel: (0131) 226 1773

Website:

<http://www.nicholsonspubs.co.uk/thekenilworthrosetreedinburgh>

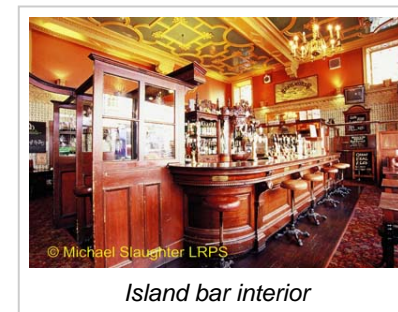
Real Ale & Cider: Real Ale and Real Cider

Public Transport: Near Bus Stop

Listed Status: A

Kenilworth ★★★

The building originated about 1780 while the interior, by architect Thomas Purves Marwick, dates from 1899 for Peter Fisher, whose family were wine and spirit merchants. It was given a careful restoration for Alloa Brewery in 1966 by architects Covell Matthews. It is one of four impressive pubs in Edinburgh with an island bar (cf. Abbotsford nearby). The island gantry is a fine piece of pub furnishing. The walls are covered in blue and white Minton tiles, topped off with rows of brown and cream tiles, finishing some two-thirds up the double-height public bar, which has a patterned plasterwork ceiling in turquoise and cream. There is a massive mirror advertising Dryborough's ales of Edinburgh, made by Forrest & Son of Glasgow who were major suppliers of such mirrors. The pot-shelf and short partitioning attached to the bar are 1966 additions, which is also the date of the Scott Room, a small room added down a new passage to the rear. Note the Art Nouveau-style stained glass windows on the front and side in the first-floor area. Listing upgraded to A in 2008 as a result of survey work by CAMRA.



Island bar interior

Edinburgh

44 Joppa Road, Edinburgh, EH15 2ET
Directions: 3m E of centre
Tel: (0131) 669 3323
Email: info@ormelietavern.co.uk
Website: <https://www.ormelietavern.co.uk>
Real Ale & Cider: Real Ale
Public Transport: Near Bus Stop
Listed Status: Not listed

Edinburgh

8 Young Street, Edinburgh, EH2 4JB
Directions: City centre in New Town.
Tel: (0131) 539 7119
Website: <http://www.oxfordbar.co.uk>
Real Ale & Cider: Real Ale
Public Transport: Near Bus Stop
Listed Status: B

Ormelie Tavern ★★

Originally a grocers shop at the base of a tenement, this became a pub in c.1904. A photograph hanging over the gantry taken in about 1920 shows the present bar fittings but on top of the gantry a row of spirit casks which were removed in the 1970s when a false ceiling was added. The gantry has ornately carved and attractively painted pillars holding up the top shelf along with a new main shelf top but some lower shelving has been lost by the insertion of two small fridges. The old bar counter front has also been painted mainly black with vertical strips painted gold. There were once four snugs here and, happily, two remain - one on the front left, slightly opened out, and the other rear left with a doorway and impressive Campbell's mirror.



Servery

Oxford Bar ★★★

The building became a pub in 1811, then a confectioners by 1843, returning to pub use in 1893. It is a small, no-frills affair which has become something of an Edinburgh institution. At the front left is a tiny stand-up bar with just two window benches seating about four people, and a few stools. There is an old fireplace on the far left, partly covered up by the counter and thus predating the existing servery arrangements. The simple mirrored gantry may date from the late 19th-century and has been added to with some basic shelving. Up three steps and through the doorway on the right is a sitting room with shutters. It also has a (possibly) 1950s brick fireplace and an old mirror promoting Murray's Pale Ale. One of the historic photos on the wall shows former landlord William Ross, who refused to serve women and Englishmen, and anyone ordering a lager would be instantly barred! It became renowned as one of the favourite pubs of fictional detective Inspector Rebus and his creator, author Ian Rankin.



Public Bar

Edinburgh

7 Piershill Place, Edinburgh, EH8 7EH

Directions: Near Jock's Lodge

Tel: (0131) 374 3843

Listed Status: B

Edinburgh

37 Rose Street, Edinburgh, EH2 2NH

Tel: (0131) 226 5402

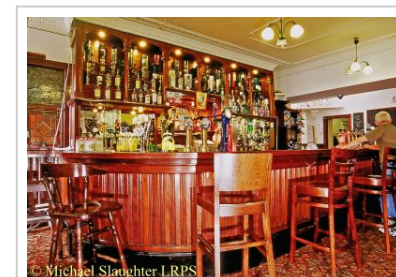
Listed Status: B

Porters ★

Recently reopened little-altered pub of 1893 with three rooms and floor mosaic at the entrance telling us this pub used to be called the Piershill Tavern. The main bar has a counter and panelling dating from just before or after the First World War. The gantry was, no doubt, remodelled at the same time but may incorporate earlier columns. Some rearrangement has taken place at the front with the jug bar (named in window glass) now incorporated into the main space. There is an odd little hatch between the jug bar area and the modernised lounge to the left with dado square panelling all around,

Robertson's 37 Bar ★

Rose Street is popular for a pub crawl and this is one of three real heritage pubs along it. It retains its splendid tall ornately carved original gantry and what is believed to be the original bar counter which has a frontage added in the 1960s and a renewed top. Built as a four-storey red sandstone dwelling in the 19th-century, the interior by P L Henderson is dated 1898. Quite possibly the bar was much as it is today. apart from the rear left section where the toilets used to be - these are now downstairs. The only other recent change is the removal of some fixed seating on the right c.2000 to create more space.



Servery



Bar

Edinburgh

1 Roseburn Terrace, Edinburgh, EH12 5NG

Directions: 1.5m W of centre

Tel: (0131) 337 1067

Email: info@roseburnbar.co.uk

Website: <https://www.roseburnbar.co.uk>

Real Ale & Cider: Real Ale

Public Transport: Near Bus Stop

Listed Status: C

Edinburgh

1 Haymarket Terrace, Edinburgh, EH12 5EY

Directions: 1m W of centre

Tel: (0131) 337 0550

Email: dutymanager@ryries.com

Website: <https://ryries.bar>

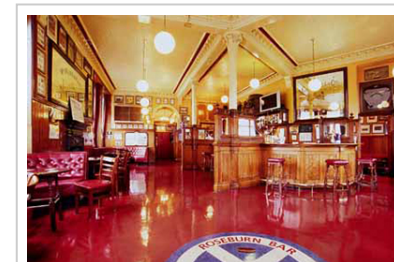
Real Ale & Cider: Real Ale and Real Cider

Public Transport: Near Railway Station (Haymarket (Edinburgh))
and Bus Stop

Listed Status: B

Roseburn Bar ★★★

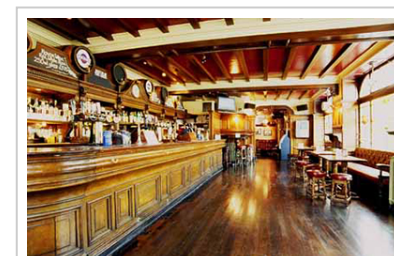
At the foot of an 1880s four-storey tenement, this large high-ceilinged public bar is thought to be much as it was, though the original gantry, as the photo in the bar shows, was increased in height in 1990. The old counter has two substantial but short partitions with mirrored panels and, rising from them, two columns with decorative capitals. The lounge, with its separate entrance in Roseburn Street, has an old counter and three columns, but the gantry and fireplace are modern. On the right is the small, separate, modernised Fly Half Bar.



Bar

Ryrie's ★★

This busy pub with its splendid wooden frontage occupies two buildings and was redesigned by Robert MacFarlane Cameron in 1906 for Messrs Ryrie and Company, whisky merchants. Entrance doors on the left both have 'Bar' leaded panels in them, suggesting that the single bar space may have been like this for a very long time. The good, spreading gantry with a still-working clock over the centre is unaltered. The original bar counter formerly curved around on the right but was shortened in 1992 to improve staff access and some panelling was re-sited. There are still working water taps on the bar that were replaced in the 1980s and some attractive coloured glass advertising various drinks. The right-hand building houses a small sitting room popular with diners. Upstairs is a modern lounge with a 'Sitting Room' window.



Bar

Edinburgh

25 Forrest Road, Edinburgh, EH1 2QH

Directions: 0.5m S of centre

Tel: (0131) 225 2751

Email: sandybellsedinburgh@gmail.com

Website: <http://www.sandybellsedinburgh.co.uk>

Real Ale & Cider: Real Ale

Public Transport: Near Railway Station (Edinburgh Waverley) and Bus Stop

Listed Status: Not listed

Edinburgh

43 The Causeway, Edinburgh, EH15 3QA

Directions: 1.5m SE of centre

Tel: (0131) 661 7974

Email: enquiry@thesheepheidedinburgh.co.uk

Website: <https://www.thesheepheidedinburgh.co.uk>

Real Ale & Cider: Real Ale

Public Transport: Near Bus Stop

Listed Status: B

Edinburgh

3 Shore, Edinburgh, EH6 6QW

Directions: 1.5m N of centre

Tel: (0131) 553 5080

Website: <http://www.fishersbistros.co.uk/the-shore-bar-and-restaurant.php>

Real Ale & Cider: Real Ale

Public Transport: Near Bus Stop

Listed Status: B

Sandy Bell's ★★

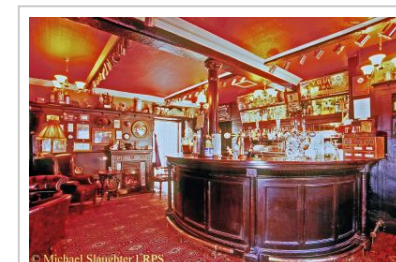
A small folk music pub barely altered in 50 years and with live music seven nights a week and also on Saturday and Sunday afternoons. It has an old gantry, bar counter, vestibule entrance and a fireplace covered by seating. The two rooms are divided by a pedimented arch; the wood panel on the counter was replaced by a glass one in recent years. The rear room has been extended by absorbing a narrow passage.



Bar

Sheep Heid Inn ★

The interior here dates from a refurbishment of c.1936, which is the date of the bar counter, gantry and mirrors. At that time the room on the left was two snugs/parlours with a small snug to the right of the bar. The wall separating the two snugs was removed c.1968 and the snug near the bar removed in the early 1970s to create a fire escape for the upstairs dining room. The snug is visible in a photo on the wall of the bar. A third room at the rear left is in a 1950s extension, leading to the skittle alley which dates from 1880s.



Bar

Shore ★★

In the ground floor of a four-storey tenement built in 1802, the public bar has a virtually intact interior dating from 1884. There is an interesting entrance with a curved timber partition. The bar has old wall panelling, a panelled bar counter, a gantry with barley twist columns, old fixed seating and a fireplace with glazed red brick interior with cupboards in the panelling to the left of it. On the rear wall is a floor to ceiling plain mirror that makes the room seem much bigger than it is. A door with a lovely colourful stained and leaded panel above (of fruit?) leads to a panelled room on the right now set up as a restaurant.



Public Bar

Edinburgh

32 North Junction Street, Edinburgh, EH6 6HP

Tel: None

Listed Status: Not listed

Edinburgh

237 Morningside Road, Edinburgh, EH10 4QU

Tel: (0131) 447 1484

Email: info@cannymans.co.uk

Website: <http://www.cannymans.co.uk>

Real Ale & Cider: Real Ale

Public Transport: Near Bus Stop

Listed Status: B

Swanny's ★

A locals pub with some old bar fittings, notably the curved panelled counter in the public bar with its pilasters and carved brackets. The four-bay gantry also looks old though only one and a half bays now serve as back fittings.



Interior

Volunteer Arms [Canny Man's] ★★

Famous multi-roomed pub with walls obscured from skirting board to ceiling with a vast collection of memorabilia accumulated over the years that impart a unique atmosphere. Please note the sign 'Dress casual but smart' on entering via the door in Canaan Street. Officially the Volunteer Arms, this was built as a two-storey private house of local grey stone and is still in the same family ownership since it became a pub in 1879. The main bar at the front of the building has an old bar counter and back gantry. On the front left is a tiny area but there is no indication it was ever a separate small snug. In the early 1960s, the rooms at the front were partially opened-up and a second counter added at the rear right. A couple of small rooms have also been brought into use. This quirky pub sells its own blended whisky and over 200 single malt whiskies; it even has a champagne menu. When not busy, drinks are occasionally served on a tray with some complimentary peanuts - the prices reflect this.



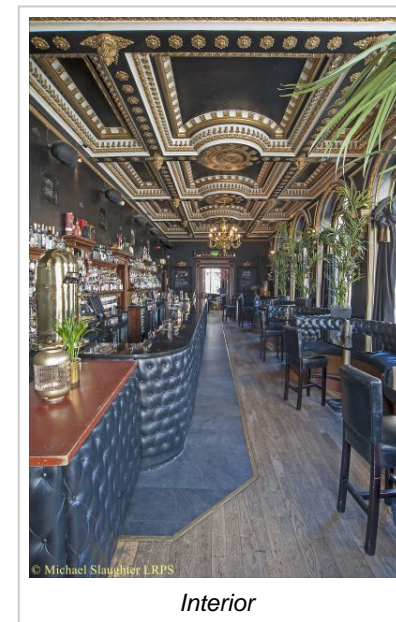
Main Bar

Edinburgh

19a West Register Street, Edinburgh, EH2 2AA
Tel: (0131) 556 7060
Email: info@thevoodooorooms.com
Website: <http://www.thevoodooorooms.com/>
Listed Status: A

Voodoo Rooms ★★★

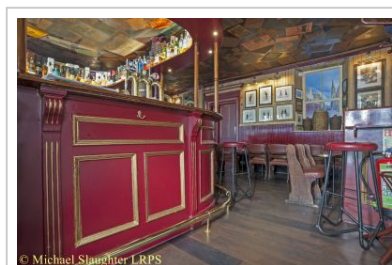
The first floor part of the Café Royal is a separate Bar, Restaurant, Live Music Venue and Cabaret Club. The bar looks very different from the photo on the front of Scotland's True Heritage Pubs as the ceiling is now painted black and picked out in gold; the floor is of standard wood panels; new tiles near the bar counter; the original bar has a new front and new top; and there are seating areas down the window side of the room. In the second bar all the partitions and the 1920s bar fittings have been retained; floor in American Bar has had the same treatment as the main bar; seating areas have been added to the restaurant section. The Ballroom can have an admission charge – it retains its wood block floor; the ceiling is now painted black and picked out in gold; and a sound booth has been added. Open from 12 noon to 12 midnight. No real ale.



Edinburgh

3-5 St. Mary's Street, Edinburgh, EH1
1TA
Tel: (0131) 557 1050
Listed Status: B

Waverley ★



Main Bar Right Hand Side

Linlithgow

179 High Street, Linlithgow, EH49 7EN

Tel: (01506) 844434

Listed Status: B

Mid Calder

Market Street, Mid Calder, EH53 0AA

Tel: (01506) 882170

Email: blackbullmidcalder@sky.com

Website: <http://www.blackbullmidcalder.co.uk>

Real Ale & Cider: Real Ale

Public Transport: Near Bus Stop

Listed Status: C

Crown Arms ★

Early 19th-century, small town pub with a little-altered bar and a small pool room. The tiny jug bar on the left is no longer separated, following the removal of the partition in c.1980, but the colourful window glass was retained and is now re-sited at the rear of the bar. Both the back gantry, with a large 'Wm Braithwaite' mirror as a centre feature, and the wood-panelled walls with benches attached could be 100 years old. The bar counter has been replaced, possibly 30-odd years ago, but it retains an old set of disused handpumps and a water tap. There are two large brewery mirrors advertising 'Bernard's Pale Ale', and one for 'John Jeffrey's Mild & Pale Ales' situated over the fireplace, and another for Mitchell Whisky. The inner doors have 'Crown' and 'Bar' on colourful glass panels. At the rear of the bar up a small flight of steps is a pool room, which has been brought into use in recent years.



Public Bar

Black Bull ★

An 18th-century pub where the small public bar on the right is barely altered in 60 years. Dating from this time are the counter and a back gantry comprising two similar sections each of three bays with mirrors. There is old tongue-and-groove wall and ceiling panelling and a tiled and cast fireplace with good mirrored mantelpiece. The bar is open evenings only during the week. Behind the servery is a former snug with old dado panelling and some old fixed seating; this is now used as the office. The passageway near the snug has full height panelled walls; the doorway to the gents' has two old advertising panels and an old 'Urinal' enamel plate above. The large lounge is all modern.



Public Bar 1

Musselburgh

10 Ravensheugh Road, Musselburgh, EH21 7PP
Directions: B1348, 1m E of centre
Tel: (0131) 665 3220
Real Ale & Cider: Real Ale
Public Transport: Near Bus Stop
Listed Status: Not listed

Musselburgh

81 North High St., Musselburgh, EH21 6JE
Directions: behind The Brunton
Tel: (0131) 665 9654
Email: bookingstaggs@gmail.com
Real Ale & Cider: Real Ale
Public Transport: Near Bus Stop
Listed Status: C

Newtongrange

80 Main Street, Newtongrange, EH22 4NA
Tel: (0131) 663 2419
Email: manager@deantavern.co.uk
Website: <http://www.deantavern.co.uk>
Real Ale & Cider: Real Ale
Public Transport: Near Railway Station (Newtongrange) and Bus Stop
Listed Status: C

Levenhall Arms ★

Three-roomed pub on the east side of town close to the racecourse and popular with locals and racegoers. Formerly a coaching inn dating back to 1830 it was refitted in 1953 and is little changed since. The bar on the left retains its lapped wood counter, mirrored gantry, beauty board panelled walls and two stone fireplaces now with radiators in front. There is a separate small games room at the rear. The lounge on the right, which was formerly two small rooms and a snug, has a gantry added in 1953 and a bar counter and fixed seating in the 1970s.



Public Bar

Volunteer Arms [Staggs] ★★

Built 1858, licensed 1860, and in same family ever since, it has a barely altered main bar with panelled walls and segmented ceiling. The late Victorian gantry with four huge spirit casks is an unusual survivor. The right-hand door led to the jug bar but this has been removed and a half door inscribed 'Jug Bar' moved to the main inner doors. There are glazed baffles to the seating, old window screens, and a couple of advertising mirrors. Beyond the bar is a lounge which once comprised two tiny snugs. A rear lounge was added post-war and refitted in the early 1990s.



Servery

Dean Tavern ★

One of only five pubs in Scotland still operating on the 'Gothenburg' principle. This multi-roomed pub with a massive public bar has been carefully modernised over the years. It was rebuilt in 1910. The public bar has three arched pillars supporting the roof in the centre of the room so it looks like two high-ceilinged rooms with a U-shaped counter protruding from the left-hand wall.



Servery

Prestonpans

227 High St., Prestonpans, EH32 9BE

Directions: W edge of town

Tel: (01875) 305741

Email: goth2023@gmail.com

Real Ale & Cider: Real Ale

Public Transport: Near Bus Stop

Listed Status: B

Prestoungrange Gothenburg ★★★

This superb pub was built in 1908 for the East of Scotland Public Houses Trust, in Arts and Crafts style. It was sold to the London-based Trust Houses Ltd in 1919 and, after a chequered late 20th-century history, reopened following meticulous restoration in 2003 which won that year's CAMRA national conservation award. The public bar is a magnificent room with superbly designed features – low segmental arches at the sides, wall panelling and rich green Art Nouveau tiling. It has a servery in the centre which would form an island but for the tiny jug bar which joins it to the front entrance. To the left is an elegantly panelled lounge/café where the emphasis is on dining rather than drinking. A tiled spiral staircase leads to the upper floor where the historic features are limited to two fine fireplaces. The building has been extended at the rear to include a small brewery (opened 2004). The name comes from the Gothenburg System – still operating here – which originated in the Swedish city in 1865 to encourage temperance. Managers gained no benefit from alcohol sales but did so from food and non-alcoholic drinks. Profits above a certain percentage (usually 5%, as here) were devoted to projects for the benefit of the community. Here they go to the Prestoungrange Arts Festival which has funded the wall and ceiling paintings at the pub and other art works in the community.



Public Bar

Tranent

131 Church Street, Tranent, EH33 1BL
Directions: N of centre
Tel: (01875) 610200
Email: enquiries@cairmcneillgroup.com
Website: <https://www.thetowerinnpub.co.uk>
Public Transport: Near Bus Stop
Listed Status: Not listed

Uphall

2-4 East Main Street, Uphall, EH52 5DA
Tel: (01506) 856465
Email: info@theoatridgehotel.co.uk
Website: <https://www.theoatridgehotel.co.uk>
Listed Status: B

Tower Inn ★

A single-storey terracotta stone pub built 1902 and still with a lot of original fittings in the stand-up bar. It has a splendid three-bay back gantry incorporating a large 'Livingstone's Malt Whisky' mirror in the centre. The pub has been subject to two significant refurbishments. Shortly after long-serving licensee James Inglis took over in 1948, a jug bar and snug on the right were removed, the long bar counter shortened and some ply panelling added to the walls of the bar. In addition, a lounge, complete with a new small counter and gantry, was created in the room on the left. New owners in 2002 refurbished the lounge and removed the 1950s bar counter and gantry. There is a good collection of brewery and whisky mirrors.



Severy

Oatridge Hotel ★

This Georgian hotel has been run by the same family for 50 years and its interior is little changed for that period.

The public bar with its modern tiled floor retains an impressive gantry from the inter-war period (or just post-war?) with five main bays. There are four columns with ridges situated at each end of the two pieces of the gantry. There are cupboards and drawers in the lower shelving. The panelled bar counter looks like an inter-war one of walnut? to which panels have been added at a later date. It curves on the right hand side and the top is only 30 years old. On the rear right there is a gap leading to the lounge, which has another section of bar counter in the same style as the public bar one and it curves; also a small gantry The gents' has four large urinals from inter-war times. On the left is a restaurant.



Severy

West Calder

43 Main St., West Calder, EH55 8DL

Tel: (01506) 799967

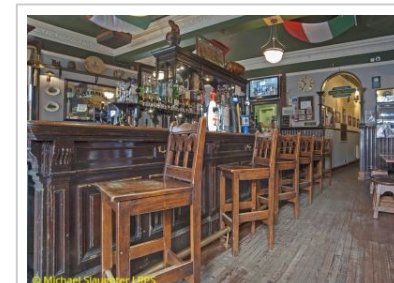
Real Ale & Cider: Real Ale

Public Transport: Near Railway Station (West Calder) and Bus Stop

Listed Status: C

Railway Inn ★★★

Built around 1895, this corner-site pub has a U-shaped servery with a bar on either side. In the centre of the servery is the star attraction, an unusual openwork gantry, delicately detailed, with a two-storey superstructure and slender turned balusters. It has a wide opening in the middle to allow staff easy access from one side to the other. Originally the servery linked up to the back wall, but a customer walkway has been created in recent times. Another significant survival, opposite the entrance, is the now-disused tiny jug bar (or if you prefer the version of some regulars, specially built as the ‘priests’ hole’ where clergy could sneak in undetected for a tippie – so are pub myths born!). A corridor leads to a large, fairly plain lounge. This, like the rest of the Railway, has wooden dado panelling. On the way there, the gents’ offers a rather splendid and unusual marble urinal, plus old wall- and floor-tiling. Listed in 2008 as a result of survey work by CAMRA.



Interior

Fife

Kincardine

16 Forth Street, Kincardine, FK10 4LX

Tel: (01324) 552398

Listed Status: C

Railway Tavern ★★★

At the end of a row of cottages, this small, friendly pub is an amazing survivor. 200 years ago it is thought to have served drovers bringing their livestock south to market. Until the coming of the railway in 1893, it was called the Ferry, which related to a crossing on the Forth about 100 yards away, taking people across to Higgins Neuk. The lettering above the door – ‘J Dobie Licensee’ – is the only outward sign that this is a pub. It refers to Janet Dobie, the mother of Ronnie Dobie, the present, fourth-generation owner. Three rooms are in public use (a fourth is now a store), all very simply appointed. Two of them have working bell-pushes connected to an annunciator box in the corridor. Here also are the remnants, in the ceiling, of what are said to be hooks from which drovers slung their hammocks. On the left is the public bar, one of the smallest in Scotland: the seating consists of metal framed seats originally constructed by Alexanders, bus builders of Falkirk. Listed in 2008 as a result of survey work by CAMRA.



Public Bar

Kirkcaldy

28 Bogies Wynd, Kirkcaldy, KY1 2PH

Tel: (01592) 205577

Real Ale & Cider: Real Ale

Public Transport: Near Bus Stop

Listed Status: A

Feuars Arms ★★★

This fine interior dates from an Edwardian refit of 1902, under local architect William Williamson, and is especially notable for its display of ceramics. The pub now mainly consists of a large bar with a 59ft-long three-sided counter. Originally this space was divided into two by a jug bar entered from Bogies Wynd, the footprint of which can be traced in the mosaic flooring which covers the whole of the present main bar: the jug bar door has been transplanted to the entrance of the gents'. At the back of the extensive servery is a semi-octagonal office with a glazed-in top (such publican's offices are very uncommon outside London): in front of it stands a long-case clock. As for the amazing ceramics, brown tiles cover the walls and the tall counter front, but pride of place goes to two Doulton pictorial panels, each consisting of a single tile. They show Touchstone and his beloved Audrey from *As You Like It*. The cartoon for the jester was also used (but with red apparel) in a series of Shakespearean panels at the St James Tavern near Piccadilly Circus in London. There are stained glass windows with the arms of Scotland, England and Ireland (what happened to Wales?). The gents' are worth a visit for the extraordinary glass-sided Doulton cistern, a pair of marble-framed urinals, tiled walls and mosaic floor. The room at the rear left was brought into use in modern times. Listing upgraded to A in 2008 following survey work by CAMRA.



Public Bar

Kirkcaldy

473 High Street, Kirkcaldy, KY1 2SN

Tel: (01592) 264270

Email: harbourbarkirkcaldy@gmail.com

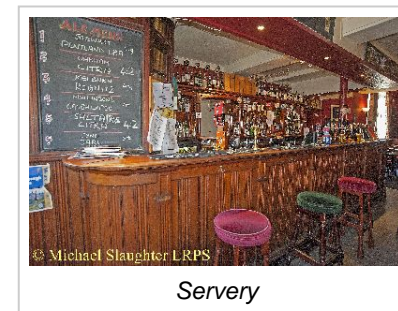
Real Ale & Cider: Real Ale and Real Cider

Public Transport: Near Railway Station (Kirkcaldy) and Bus Stop

Listed Status: C

Harbour Bar ★

The building dates from c.1870 and was a ship's chandler's until it became a pub in 1924; it is one of few pubs still with a jug bar. In the porch, doors lead to the bar on the right, lounge on the left and in front of you is the tiny intact jug bar with its two half-width doors and two tiny hatches to the bar. The main bar on the right retains its original mirrored back gantry with fluted pilasters, bar counter and half-height panelled walls. At the rear is an area created during a 1960s flat roof extension to the building. Lounge on the left has no old fittings apart from the panelled ceiling with decorative plasterwork of thistles, roses and clover. Behind the pub is the Fyfe brewery established in 1995.



Severy

Greater Glasgow & Clyde Valley

Auldhouse

12 Langlands Road, Auldhouse, G75 9DW

Tel: (01355) 263242

Public Transport: Near Bus Stop

Listed Status: C

Bishopbriggs

130 Kirkintoloch Road, Bishopbriggs, G64 2LT

Tel: (0141) 762 0655

Email: quinsbar@gmail.com

Website: <https://www.quinsbar.co.uk/>

Public Transport: Near Railway Station (Bishopbriggs)

Listed Status: Not listed

Auldhouse Arms ★★

A 200-year-old single storey village pub that has expanded in recent years but retains, little changed, its original public bar and two-sitting-room core. The public bar has a splendid quarter-circle gantry, with four upright spirit barrels, that probably dates from the 1920s. The curved bar counter, with a noticeable slope on the left side, and the floor-to-ceiling match-board panelling are also from the 1920s, but the quarry tiled floor is new. A tiny shop to the right was absorbed into the pub in the 1970s and is now a snug with the pub entrance moved from the centre of the public bar to the right. The panelled rear snug has old mirrors and basic bench seating.



Interior

Quin's Bar ★

Large basic, high-ceilinged Edwardian bar with a small snug. The public bar has an attractive pedimented back gantry with mirrored panels, a clock and some modern additions. The original bar counter has lost its spittoon trough and there are four columns with ornate capitals picked out in gold. A sitting room on the left was absorbed into the bar by removal of part of the adjoining wall in the late 1990s. On the right hand side of the pub is the separate family department, which was in operation until 1994 and is now a snug with old seating.



Servery

Bothwell

1-3 Main Street, Bothwell, G71 8RD

Tel: (01698) 850888

Email: info@rivarestaurants.com

Website: <http://www.rivarestaurants.com/camphill/>

Real Ale & Cider: Real Ale

Public Transport: Near Railway Station (Blantyre) and Bus Stop

Listed Status: C

Coatbridge

37 Sunnyside Road, Coatbridge, ML5 3DG

Tel: (01236) 423773

Listed Status: Not listed

Camphill Vaults ★

A red sandstone-built pub dating from about 1900. The public bar retains most of its original fittings, including a decoratively carved quarter-circle bar counter and a splendid high L-shaped back gantry made of rosewood, linked by an arch in the corner; it is pleasing to see that the lower shelves of the gantry remain intact and a new fridge has been placed within the servery instead of replacing shelving, as usually happens. Judging from the photograph taken 70 years ago that hangs in the bar, the only change has been the removal of small spirit casks and the replacement of the clock. The 'Family Department' room has Victorian ceilings, a fireplace, and an unusual flap allowing staff access behind the counter.



Servery

St Andrews Bar ★

Two-storey corner pub, notable for the 1960s Formica bar counter in the public bar. It has a canted white front and a deep pink top, both of Formica - such distinctive artefacts from this era are rare indeed. The gantry is probably from the same date as the main shelf is also deep pink Formica - most of the lower shelving is intact. Walls are mostly panelled to picture rail height and some of this looks old. The lounge/snug behind the servery has much 1960s ply panelling and two impressive large advertising mirrors.



Public Bar

Glasgow

803 Govan Road, Glasgow, G51 3DJ

Tel: (0141) 445 1349

Listed Status: B

Glasgow

129 St. Georges Road, Glasgow, G3 6JA

Tel: (0141) 332 5125

Website: <https://proper-pubs.com/our-proper-pubs/camerons-glasgow/>

Listed Status: Not listed

Brechin's ★★★

This fine building dates from 1894 when it opened as the Cardell Hall, named after John Cardell who used it as the local headquarters for the Rechabites, a charitable organisation which espoused the virtues of Temperance. Ironically, now a pub, it has a very interesting, intact spacious interior of about 1960 which features a late example of the Scottish island-servey. This is mostly surrounded by the roomy public bar with ply-panelled walls and fixed bench seating in the alcoves but at the back there is also a screened-off lounge area with a hatch to the servey and red leatherette-covered bench seating. Upstairs is a former lounge, now used as a function room with panelled walls and a hooped stall for waiters. High up on the south side outside is a carving of the legendary Govan Cat, famed for its stupendous rat-exterminating abilities



Island Bar

Camerons ★★

This dimly-lit island-style bar that was subject to a sympathetic refurbishment in 2004 which left the layout and fittings much as they have been for many years. It retains the original Edwardian island bar counter, an old island gantry, three snugs, and the panelling was repainted and fixed seating renewed. A fourth snug situated on the front right was lost many years ago and then in 2012 the snug on the front left was removed leaving only two. The ladies' toilets in the rear right were only added in recent years. Cast-iron pillars support the high-coffered ceiling with good cornice work but the quarry tiled floor is modern.



Public Bar

Glasgow

266 Bath Street, Glasgow, G2 4JP

Tel: (0141) 332 2833

Website: <http://thegriffinglasgow.co.uk/>

Real Ale & Cider: Real Ale

Public Transport: Near Railway Station (Charing Cross (Glasgow)) and Bus Stop

Listed Status: B

Glasgow

708 Pollokshaws Road, Glasgow, G41 2AD

Tel: (0141) 423 0380

Website: <https://www.heraghtysbar.com/>

Listed Status: Not listed

Griffin ★

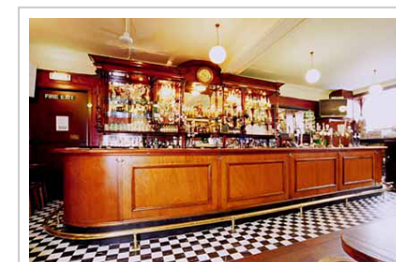
Some superb remnants still exist from a grand remodelling in Art Nouveau style in 1903-4 under architect William Reid, but they are just remnants, following crass alterations in the 1960s. The exterior, however, still retains much of the exciting, original flavour. Inside, the counter front and base of the gantry are original but the most interesting work is around the periphery with clear remains of snugs behind wide, arched openings, including stained glass work.



Servery

Heraghty's Bar ★

Small Edwardian drinkers' pub with an elegant carved back gantry that is adorned with mirrors, columns and decorative capitals. The bar counter, which has modern tiles around the base, was installed in the 1930s, which is the date of the Art Deco glass. Other original fittings include a large column in the middle of the room, with a number of now redundant match strikers, a modest frieze around the walls, and old panelling on the walls. The fixed seating looks at least 30 years old, while the ladies' toilet was only installed in 1996 following complaints!



Public Bar

Glasgow

17 - 19 Drury Street, Glasgow, G2 5AE

Tel: (0141) 248 6368

Email: enquiry@thehorseshoebarglasgow.co.uk

Website: <https://www.thehorseshoebarglasgow.co.uk>

Real Ale & Cider: Real Ale

Public Transport: Near Railway Station (Glasgow Central) and Bus Stop

Listed Status: A

Horse Shoe ★★★

Something of a Glasgow institution, the Horse Shoe is one of the finest examples of Scotland's Victorian island-bar pubs. It was built in 1870 and remodelled in 1885–7 by publican John Scouller, then again in 1901, when the partitions between sitting rooms and the bar were removed. The horseshoe motifs said to derive from the fact that Scouller was a keenequestrian. At just over 104 ft round the outer circumference, the counter is the second longest in the UK after the Falcon at Clapham Junction, London, which weighs in at a mighty 125ft. The initials 'JYW' in glazed screens on the counter and elsewhere refer to John Young Whyte, who succeeded Scouller in 1923. The main island gantry includes eight spirit casks ends on their sides (used until the 1930s) with, unusually, two taps in each. There is a second, small circular gantry with a marble shelf but its top seems modern. On the side walls there are two horseshoe-shaped fireplaces: the similar features on the rear wall seem to have always been just ornamental. At the front is a clock with the twelve letters of 'The Horse Shoe' instead of numbers. The panelled walls have large bell-pushes towards the rear, mostly set in decorative panels. The skylight at the rear right was added in 1985. Listing upgraded to A in 2008 as a result of survey work by CAMRA.



Island Bar Interior

Glasgow

58 Bridge Street, Glasgow, G5 9HU

Tel: (0141) 429 4528

Email: lauriestonbar@gmail.com

Real Ale & Cider: Real Ale

Public Transport: Near Railway Station (Glasgow Central) and Bus Stop

Listed Status: C

Laurieston Bar ★★★

This small, friendly pub has one of the most remarkable interiors in the UK. It is the most intact example of pub-building (in fact remodelling) from about 1960 and is, thus, as important as a great Victorian pub – only very much rarer. Behind what is, frankly, an unprepossessing exterior with its black and white mosaic and distinctive lettering, traces of the Victorian building survive in three iron columns, the floortiling in the gents and the lower parts of the central gantry. But back to modernity – facing the Bridge Street entrance is a small intact off-sales, either side of which are the lounge (right) and public bar (left). The latter has fixed seating, a series of narrow, two-tiered fixed Formica tables and contemporary low chairs. The boarded bar counter (with Formica top) is a fairly simple affair, not unlike work of the 1930s, but the suspended structure over it and the ceiling panelling are quintessential 1960s work. There's even an original heated glass food display unit on the counter. The lounge is a touch smarter, with more fixed seating, carpeting, panelling and a number of bell-pushes for service. To complete the picture, Formica covers the walls in the loos. Listed in 2010 following a successful application by CAMRA.



Lounge

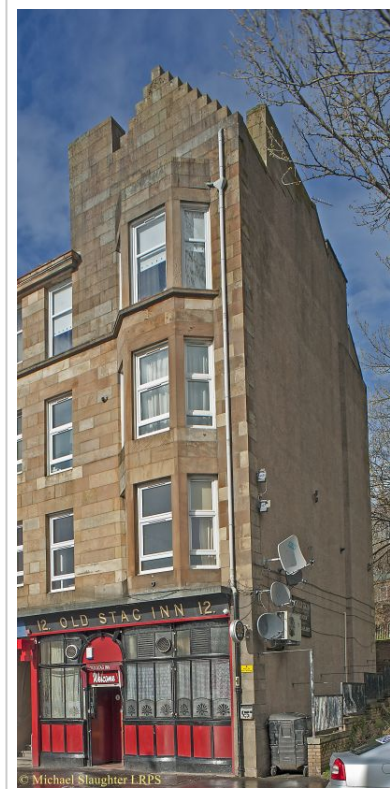
Glasgow

12 Greenview Street, Glasgow, G431SN

Tel: None

Listed Status: Not listed

Old Stag Inn ★



Exterior

Glasgow

1-3 Paisley Road West, Glasgow, G51 1LF

Tel: (0141) 258 4830

Real Ale & Cider: Real Ale

Public Transport: Near Railway Station (Anderston) and Bus Stop

Listed Status: B

Old Toll Bar ★★★

Glasgow's finest pub interior, situated in the ground floor of a three-storey tenement built in 1860 and remodelled in 1892-3. One hundred years ago, there were many ornate pubs like this throughout the city, as publicans went to great lengths to outshine their competitors at a time when skilled labour was cheap. This is one of the last remaining Victorian 'palace pubs' in Glasgow; sadly, similar interiors have been ripped out in recent times only to be replaced by poorer quality modern fittings. The large bar has a magnificent dark wooden back gantry incorporating two sets of four whisky casks either side of a mirrored centrepiece, a pediment and central clock. There was a tier of smaller barrels in the recess below the large barrels but they were removed some time ago. The original long bar counter with some part glazed short partitions has a new polished stone top.



Mirrors

Glasgow

1169 Shettleston Road, Glasgow, G32 7NB

Tel: (0141) 778 6657

Listed Status: B

Portland Arms ★★★

The most intact Art Deco pub interior in Britain and also a good example of Scotland's island bar pubs. Rebuilt in 1938, it is a single storey structure designed by architects Thomas Sandilands & Macleod for a family that held it until 2006. In front of the entrance is a three sided lobby with a disused 'Family Dept' (off-sales) where service was via a small opening in a glazed panel. To the left of the entrance is a small office (now a store). The centrepiece at the Portland, however, is the main bar with its central servery, with banded veneer counter, whose oval shape is matched by the canopy above, all with smooth detail that is so typical of the 1930s. It has a central gantry with the top part supported on chrome-plated tubing. The original fixed seating has wooden dividers and match strikers on them (match strikers also appear on the bar counter). Each corner of the pub has a small snug: that at the front right is particularly interesting as being named as 'Ladies Room' in the door glass and has a ladies' toilet leading off it. The only major changes since 1938 are the replacement of the floor covering and modernisation of the toilets. This is a popular drinkers' pub which gets packed when Celtic are playing at home, and is regularly used by film companies for period dramas.



Island Bar Interior

Glasgow

1410-1416 Shettleston Road, Glasgow, G32 9AL

Tel: (0141) 778 2368

Listed Status: C

Glasgow

112-114 Stockwell Street, Glasgow, G1 4LW

Tel: (0141) 552 8681

Website:

<https://www.belhavenpubs.co.uk/pubs/lanarkshire/scotia-bar/>

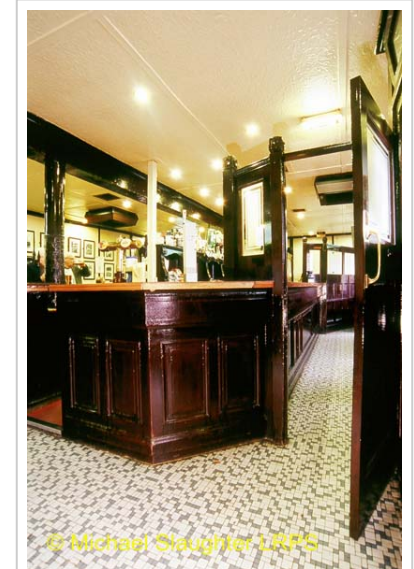
Real Ale & Cider: Real Ale

Public Transport: Near Railway Station (Argyle Street) and Bus Stop

Listed Status: Not listed

Railway Tavern ★★★

The exterior may not look much but this is a welcoming corner-site local. It has a substantially intact Edwardian interior with a typically Glasgow island-bar arrangement, probably laid out after the pub was taken over by the Neilson family in 1903. The right-hand door leads into a self-contained 'familydepartment'. The main entrance is on the left and has a small vestibule inside. There is a narrow bar fronting the road and to the right of this is an L-shaped drinking area running round the servery. On the far left are a couple of sitting rooms and between them an annunciator box with three discs, which suggest there was originally an extra sitting room, now taken by the ladies' toilet. In the middle of the servery is a low island gantry with a couple of drawers for takings, predating the advent of the electronic till. There appears to have been a refit in the post-war period, whence the mosaic floor and the loss of doors.



Interior

Scotia Bar ★★

First licensed in 1815, this pub is famous for a folk music tradition started in the early 1960s, the most famous artist to appear here being the Glasgow legend Billy Connolly. The mock-Tudor frontage and a number of fittings date from a refurbishment in 1929. The bar counter has the old terrazzo spittoon trough around the base and match strikers all along the top; there is a mirrored back gantry and a part-glazed partition on the left, which creates a separate small bar. Following a period of closure, the pub was refurbished by Brendan McLaughlin in 1987, which is the date of the rear section of the back gantry, the short partitions and panelled walls. On the right, another partition creates a tiny snug on two levels, and there are signs of another snug at the front where some bell-pushes remain.



Public Bar

Glasgow

Argyll Arcade, Glasgow, G2 8BG

Directions: Off Argyll Street via Argyll Arcade (normal shopping hours only) or via Morrisons Court (lane between Argyll St & Buchanan St).

Tel: (0141) 221 8886

Email: info@sloansglasgow.com

Website: <http://www.sloansglasgow.com/>

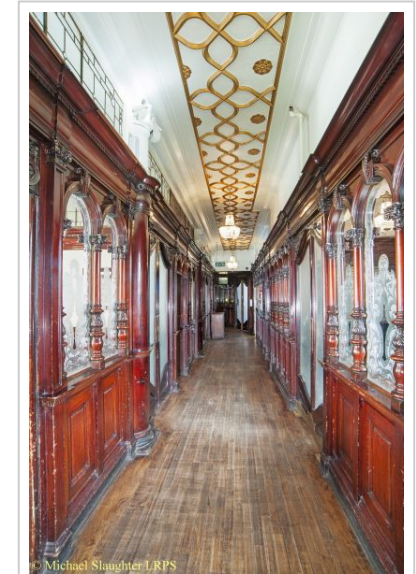
Real Ale & Cider: Real Ale

Public Transport: Near Railway Station (Argyle Street) and Bus Stop

Listed Status: A

Sloans ★★★

An early 19 century courtyard building, the interior was remodelled in 1900 by Charles H Robinson, a specialist in ornate bar interiors, the rich decorative scheme being commissioned by David Sloan, a prominent Glasgow publican of the era. The entrance from the adjacent Argyle Arcade is a vestibule and staircase of exceptional quality with patterned tiles and dado. The ornate timber staircase continues with mosaic floor, panelling and wall-painting to the magnificent upper floors. Here is a series of rooms with beautiful timber partitions and elaborate ceilings; note that these rooms are not regularly open. The large ground floor bar is all modern in restrained Edwardian style, but has a good island counter and central gantry.



First Floor Corridor

Glasgow

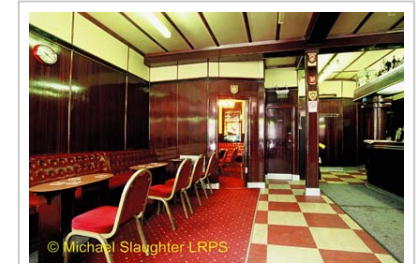
62 Glassford Street, Glasgow, G1 1UP
Tel: (0141) 552 2283
Email: liamstepsbar@yahoo.com
Listed Status: B

Glasgow

22 Paisley Road West, Glasgow, G51 1LB
Tel: (0141) 429 0665
Public Transport: Near Railway Station (Exhibition Centre (Glasgow)) and Bus Stop
Listed Status: Not listed

Steps Bar ★★★

This, with the Portland Arms, is one of Glasgow's two well-preserved Art Deco pubs, refitted by new owners, the Taylor family, in 1949. The frontage is clad in Vitrolite panelling and has frosted glass windows (one replaced in 2006). The interior is gloriously complete with veneer-panelled walls, and original gantry and counter. There is a small sitting room on the left with more panelling, fixed seating and bell-pushes. Here a stained glass panel window depicts the Cunard liner RMS Queen Mary, launched on the Clyde in 1936: a Spitfire flies above, no doubt the choice of Thomas Taylor who had flown with Coastal Command and Transport Command in the war. It is said that much of the woodwork was a mock-up of part of the Queen Mary displayed at the huge 1938 Empire Exhibition in Glasgow and was stored during the war by a firm of builders known to the Taylors, although the official programme for the exhibition makes no mention of, or advertisement for such an exhibit. The only changes have been the replacement of floor coverings, the new gents' at the rear and the addition of a 1950s ladies' for the first time (hence the Formica-panelled walls, as also found at the Laurieston Bar).



Public Bar

Viceroy ★

Single storey building with an island bar interior from the inter-war period with some post-war embellishments. The island bar counter has a terrazzo trough all around the base and the top appears old with banks of founts. The island gantry looks inter-war.



Island Bar

Glasgow

159 Bridgegate, Glasgow, G1 5HZ
Tel: (0141) 552 6040
Listed Status: Not listed

Glasgow

226 Great Western Road, Glasgow, G4 9EJ
Tel: (0141) 332 3532
Email: wintersgills@hotmail.co.uk
Website: <https://wintersgillsglasgow.co.uk>
Listed Status: Not listed

Victoria Bar ★

After a spell as a restaurant, which saw removal of some old fittings, the Victoria Bar is a pub again - the former Clutha Vaults (victim of a 2013 helicopter crash) is now a room at the back. The bar still has its Victorian four-bay gantry, though with some changes, including loss of much lower shelving. The counter is original, with match strikers all along, pillasters and two ornate brackets. A little of the full-height panelling survives.



Servery

Wintersgills ★

Much of what you see here is from a 1936 refit, including the ten-bay gantry in the main bar with Art Deco touches, mirrored panels, a clock and much original shelving. The ply panelled counter is also from 1936 though the top is modern. Half-height panelling of the same period runs round the room and continues down the staircase to the gents'. The sitting room at the rear has few old fittings.



Public Bar

Gourock

64 - 65 Shore Street, Gourock, PA19 1RF

Tel: (01475) 638399

Email: info@lylesbar.co.uk

Website: <https://www.lylesbar.co.uk/>

Public Transport: Near Railway Station (Gourock)

Listed Status: Not listed

Greenock

7 Laird Street, Greenock, PA15 1LB

Tel: (01475) 720028

Email: theblackcatgreenock@outlook.com

Public Transport: Near Railway Station (West)

Listed Status: Not listed

Monteiths ★

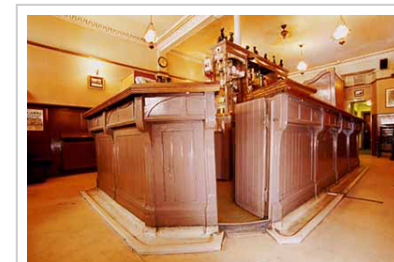
Small drinkers pub built in the 1890s that retains its original seven-tier back gantry and U-shaped bar counter. The public bar has good cornice-work and two old mirrors but the panelling and seating areas date from 1990s. The rear sitting room with '2' on the door has some fixed seating, which is possibly inter-war. Originally, the left hand door led to a ladies' snug but the partition was removed some years ago - its position was where the terrazzo trough around the base of the bar finishes. Look for the stuck-on lettering high up in the right hand porch advertising 'Campbell's Edinburgh Ales' and various spirits.



Public Bar

Black Cat Bar ★

Town centre locals' pub of classic island bar-style with only a narrow area around it for drinkers. Apart from repainting, it has remained much as it is today for over 50 years. It retains an island counter at least 70 years old, with a replacement top, and a modest island gantry. The porch has a terrazzo floor which is also the material used for the old spittoon trough around the bar. There is a good cornice and the whole room has old dado panelling. The only significant change in the past 50 years is the adding of a ladies' toilet. Popular with Celtic fans.



Public Bar

Hamilton

289 Glasgow Road, Burnbank, Hamilton, ML3 0QG

Directions: corner of Glenlee Street

Tel: (01698) 307310

Listed Status: Not listed

Larkhall

3-5 London Road, Larkhall, ML9 1AQ

Tel: (01698) 883463

Listed Status: C

Empire Bar ★

A basic urban pub built 1907 in classic island bar-style. It retains its original island bar counter with short partitions and some front panels that were added in the 1980s. The dividing strips, ornamented with a badge and a diamond, are original: the Formica bar top is new, and running just underneath all the way along it is a match-striker. The original two-part island gantry has a modern top section. The old vestibule entrance on the Glenlee Street side has three doors, one of which originally led to the family department. There is a shallow vestibule on the Glasgow Road side entrance. The two open sitting rooms on the left look little altered since the 1930s; the small lounge at the rear is now a store room.



Island Bar Interior

Village Tavern ★

A popular drinkers' pub in a late 19th-century sandstone building, last fitted out during inter-war times in island-bar style. The counter has ribbed panels apart from the front section, which may indicate the loss of a jug and bottle. The modest island gantry with space for staff to walk through the central part has an old till drawer that was in use up to 2000. There are wood-panelled walls to picture-frame height all around; fixed, slatted benches; a 1920s-style tiled and wood surround fireplace; two old brewery mirrors, and Murray's window screens and a decorative cornice. The partitioned area in the far right corner is a spirits cupboard, and has a '5' on the door. There were two tiny snugs at the rear but both are now used for storage. Some customers still get table service on a shout of 'Hoy'.



Island Bar Interior

Paisley

18 Moss Street, Paisley, PA1 1BL

Tel: (0141) 889 2742

Website: <http://brewerstap.co.uk/>

Public Transport: Near Railway Station (Paisley Gilmour Street) and Bus Stop

Listed Status: Not listed

Brewers Tap ★★

It retains its original island bar counter with a ply panelled front. The island gantry is long and narrow with two parts of three bays each and a narrow walkway for staff to cross to the other counter. It is good to see that fridges have been placed under the counter leaving lower gantry shelving intact. Over the rear of the island bar is a stained and leaded glass skylight. In the rear area there are another three modest stained and leaded skylights. The floor is of red tiles laid diagonally with a white terrazzo border / trough all around the base of the counter. On the left and right walls there are impressive large 1930s brick fireplaces of a size not seen in any pub that we are aware of.



Interior

Paisley

7 New Street, Paisley, PA1 1XU

Tel: (0141) 849 0472

Email: bullinn.paisley@stonegatepubs.com

Website: <http://www.greatukpubs.co.uk/bullinnpaisley>

Real Ale & Cider: Real Ale

Public Transport: Near Railway Station (Paisley Gilmour Street) and Bus Stop

Listed Status: A

Bull Inn ★★★

Although not as well known as the best historic pubs of Edinburgh or Glasgow, the Bull has one of Scotland's finest and most interesting pub interiors. It was rebuilt in 1901 to designs by a local architect, W.D. McLennan (1872–1940) who takes up the modern, inventive architecture we associate with his great contemporary, Charles Rennie Mackintosh. The (disused) narrow, right-hand door at the entrance leads to a tiny, intact former off-sales compartment. The front window has stained glass with attractive flowing designs and the interior has a decidedly Art Nouveau flavour.. The panelled public bar has an impressive gantry down the right-hand side housing a series of spirit casks. It also retains four sets of quadruple spirit cocks, a rare survival of draught spirit dispense. Over the counter is the unusual device of six arched service areas. Moving back, there is a glazed partition behind which are three delightful glazed snugs, one still with its door: the glazing to these spaces appears to be a modern replacement (it is quite different and less substantial from that elsewhere in the pub). New toilets have replaced two snugs which used to lead off the top-lit area at the rear and which is characterised by highly individual, attenuated detailing.



Public Bar

Shotts

82 Shottskirk Road, Shotts, ML7 4EP

Tel: 07738 827019

Website: <https://the-old-wine-store.business.site/>

Listed Status: Not listed

Uddingston

60 Old Mill Road, Uddingston, G71 7PF

Tel: (01698) 525263

Real Ale & Cider: Real Ale

Public Transport: Near Railway Station (Uddingston) and Bus Stop

Listed Status: B

Old Wine Store ★

This edge-of-town pub with a stand up drinkers' bar is possibly the only one in Scotland still selling whisky from the barrel. Situated in a building dated 1927 it has a U-shaped bar counter and island gantry, which are believed to have come from the original Old Wine Store pub situated 100 yards up the road. The splendid island gantry has four tall upright casks and the third one on the left is still in use and dispenses Whyte & McKay's Blended Whisky. Note the tiny 'Doctor's Special' mirror on the lower end of the gantry and the small till drawer. The pub still retains a working off-sales on the left but the partition that separates it from the bar has been replaced in recent years. On the right side of the room are some new low partitions and fixed seating. Up to 2003 this area consisted of three tiny snugs. The games room at the rear is a conversion of a former ground floor cellar. The ladies' toilet was added in the 1970s.



Rowan Tree ★★

An early 19th-century, single-storey building, remodelled in 1902–3. It retains its old long bar counter (on which are two working water taps), carved gantry with impressive mirrors and two small, glazed cigar cabinets, Victorian fireplaces, bench seating, wood-panelled walls and ceiling. The centrally placed jug and bottle and its two partition walls were removed in about 1980, unfortunately, thus creating a single space. The pub has a pair of smart sitting rooms of 1970s on either side of the historic core.



Wemyss Bay

Pierhead Greenock Road, Wemyss Bay, PA18 6AA
Tel: (01475) 521265

Wishaw

121 Main Street, Wishaw, ML2 7AU
Tel: (01698) 372320
Email: ljay08@hotmail.com
Listed Status: Not listed

Wemyss Bay Station Bar ★

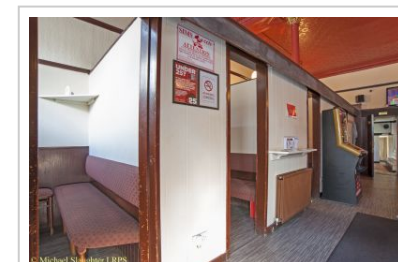
The Station Bar is entered directly from the station concourse via a small vestibule which has a terrazzo floor, the original glazed doors and half-height wood panelling. Inside, the single small room has much original half-height wallpanelling, stained dark brown. The bar counter front is original. The bar back has some original timber work but has been partly modernised. Above the shelving is a modern varnished timber fascia board with Wemyss Bay Station Bar in sign-written lettering, proclaiming it as a Free-House established in 1903. Around the walls there is fixed seating, though this has been partly modernised and re-upholstered. No real ale.



Bar back

Imperial Bar ★

This town centre drinkers' pub is most interesting for its layout, with a series of four snugs along the left-hand side which were probably mostly installed a decade or so after the Second World War. They have high sides and three of them are just large enough to accommodate a table and seats around three sides. The back gantry, which is modern, and bar counter are arranged on the right-hand side, parallel to the snugs.



Row of Snugs

Highlands & Western Isles

Inverness

106-110 Academy Street, Inverness, IV1 1LX

Directions: 150m W of the bus station

Tel: (01463) 240300

Website: <http://www.phoenixalehouse.co.uk/>

Real Ale & Cider: Real Ale

Public Transport: Near Railway Station (Inverness) and Bus Stop

Listed Status: B

Rosemarkie

48 High Street, Rosemarkie, IV10 8UF

Directions: Follow the A832 through Fortrose and Rosemarkie.

Tel: (01381) 620164

Email: blackisleltd@gmail.com

Real Ale & Cider: Real Ale

Public Transport: Near Bus Stop

Listed Status: C

Phoenix Ale House ★★

Built in 1894, the spartan public bar is of classic Scottish island bar-style. It is much as it was, with the original island counter, a terrazzo spittoon trough running all the way around the base and three disused Dalex tall fonts. However the island gantry was replaced in 1983. The shallow vestibule has curved, etched side windows and 'Push' on the inner door panels. The floor pattern could indicate a partition that divided the drinking space in two. The water engine used to raise the beer from the cellar has been converted to electric power and can be seen in an illuminated case high up on the rear wall of the bar. In the 1980s the pub expanded into the property on the right and, apart from a ceiling rose, the lounge, 'Morgan's', has no old fittings.



Interior

Plough Inn ★★

A small pub rebuilt in 1907 (as a stone inscription above the entrance explains) with a delightfully fitted-out, virtually intact front room. This has its original semi-circular counter and simple gantry. The room is entirely panelled and also has a tongue-and-groove boarded ceiling. Attached to the right-hand side of the servery is a small office for the publican, now used for storage. The fireplace has a huge lintel dated 1691 but his is a replica in cast iron dating from 1907 of a marriage stone. Such stones usually comprised a lintel such as this with the initials etc. of a newly married couple. Above is a large, vintage Dewar's Perth Whisky mirror. The infill of the fireplace and tiled floor are later features.



Public Bar

Stornoway

32 Point Street, Stornoway, HS1 2XF

Tel: (01851) 701990

Email: I.Mackillop@btopenworld.com

Public Transport: Near Bus Stop

Listed Status: Not listed

Criterion Bar ★

Small single bar with a narrow frontage that is the only pub or hotel in the Western Isles with an historic interior. It was refitted in the 1930s and retains the bar counter which curves at the left / front end. The gantry mostly dates from the 1930s but the third bay has some modern tiling. A couple of fridges have replaced lower bar back shelves. There is 1930s dado paneling around the room and fixed seating which may date from the 1930s but has been re-covered in modern times. The window screen looks modern and frosted 'Bar' glass in the two inner doors looks replacements. Toilets were modernised in c.2000.



Public Bar

Loch Lomond, Stirling & The Trossachs

Bo'ness

42-54 North Street, Bo'ness, EH51 0AG

Tel: (01506) 824717

Listed Status: C

Falkirk

76 High Station Road, Falkirk, FK1 5QX

Tel: (01324) 632454

Email: woodsidefalkirk@gmail.com

Website: <https://www.woodsideinnfalkirk.co.uk>

Real Ale & Cider: Real Ale

Listed Status: Not listed

Anchor Tavern ★

This small stone-built town pub of 1891 has a public bar with original back gantry with carved columns and Usher's India Pale Ale and Taylor's & Ferguson Scotch Whisky mirrors. The bar has post-war ply-panelled walls, an attractive geometric-patterned ceiling, and two good stained and leaded window screens. The original bar counter has a post-war ribbed hardboard frontage and a water tap on top. There used to be a small snug on the left, but the short partition enclosing it was removed in 2008. The windows and tiled floor are modern.



Gantry

Woodside Inn ★

A popular stand-up drinkers' pub built 1898 with a U-shaped original counter that takes up an incredible amount of space compared to the size of the room. The vestibule entrance has doors with colourful 'Bar' windows to the left and right, but nowadays you enter via the half doors with 'Family Bar' panels in front of you. In the late 1980s, the two partition walls that formed the off-sales were removed to create a completely walk-around bar. The panelled walls are original, as are the Victorian tiled fireplace and the bench seating opposite, but the island gantry was replaced in 2003 and other seating renewed. Other original features include a large frieze of Fleur-de-lys and thistles all around the room, two large Geo. Younger's mirrors, and another for Highland Queen whisky.



Bar

Tayside

Arbroath

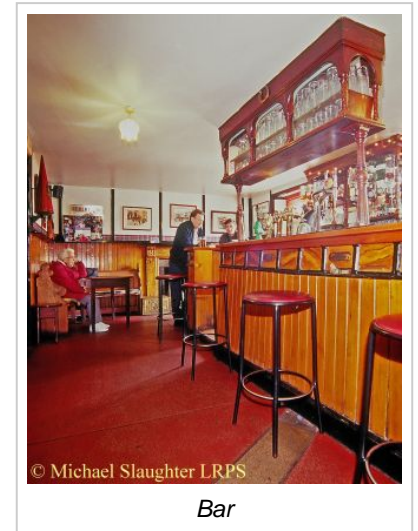
5-7 East Mary Street, Arbroath, DD11 1PR

Tel: (01241) 872524

Listed Status: Not listed

Foundry Bar ★

Single-storey, dormer-windowed drinkers' pub with three rooms, that has been in operation since 1861. The small bar retains its original counter with a series of painted panels interspersed with Swan Vesta match-strikers. On top of the counter is a wood gantry some 50 years old that reaches to the ceiling. There is a modest original back gantry on the left; on the right was the former off-sales. The walls retain their original panels and the old fireplace has a lintel with the date 1775. Look for the gauge on the wall from the days when the beer was raised from the cellar to the bar by mains water pressure. The lounge at the rear retains its old panelled walls with bell-pushes at the front; it was extended back in the late 1980s to twice its original size. On the left, two small rooms have been converted to a games room, which retains some old bench seating.



Bar

Arbroath

14-16 Lochlands Street, Arbroath, DD11 3AB

Tel: (01241) 873286

Listed Status: Not listed

Blairgowrie

101 Perth Street, Blairgowrie, PH10 6DT

Tel: (01250) 873142

Real Ale & Cider: Real Ale

Listed Status: Not listed

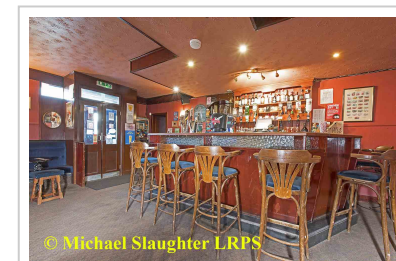
Lochlands Bar ★

The lounge is the star attraction here as it is little changed since its creation in 1963. Built in 1899 of red sandstone. In 1963 the adjoining house was acquired and a new lounge created and the public bar refitted and there are many 1960s fittings remaining. The dimly lit public bar has a counter that was moved back by a foot or so in the late 1960s. The walls are covered by 1960s wallpaper that looks like fielded panelling. The gantry is more of the 'wallpaper' with optics attached. In 1963 there was a snug situated on the right end of the serverly, now combined with the public bar.

The lounge contains a very 1960s canted bar counter of plywood with a row of ribbed glass along the top of most of it. The wooden top is of sapele and when opened the new room was called the 'Sapele Lounge'. The top part of the gantry dates from c.1990.

Stormont Arms ★

A little-altered drinkers' pub that stocks its own label 25-year-old blended whisky with a cask strength of 59%. The public bar has a 100-year-old gantry, an old bar counter with a replacement front, and two old whisky mirrors - one for Dewar's, the other for Bell's. The off-sales and its sliding hatch have been retained. The lounge has some fittings from the 1950s and there is another room in a small extension with old fixed seating but the fireplaces have been lost. Unaltered gents'.



Lounge Bar



Public Bar

Brechin

44 St David Street, Brechin, DD9 6EQ

Tel: (01356) 625405

Real Ale & Cider: Real Ale

Listed Status: Not listed

Brechin

1 Market Street, Brechin, DD9 6BA

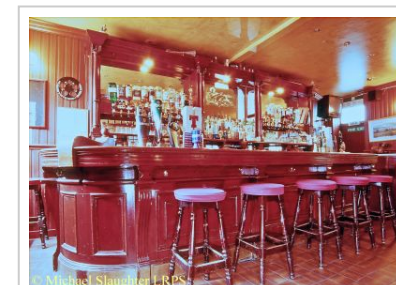
Tel: (01356) 625862

Public Transport: Near Railway Station (Brechin City)

Listed Status: B

Brechin Arms ★

A corner site pub with a Victorian gantry with shafts and modern mirrors. The walls of the main bar are fully covered with panelling, perhaps from the 1960s or 1970s. There are two archways to a modern lounge created in a former shop on the right.



Servery

Dalhousie ★★

Red sandstone town centre pub of 1879 with a public bar that has not changed in 50 years. This high-ceilinged space retains its original full-height panelling and horseshoe-shaped counter which may date from the 1950 or 1960s. There is an old gantry but also a modest island fitting, possibly a 1950/1960s addition, which is on wheels and has to be moved to gain access to the cellar below. There is 1930s windows glass advertising 'Afternoon Teas', and three old window screens: one is framed on the wall and the other reads 'Breakfast Luncheons High Teas'.



Gantry

Dundee

47 Dura Street, Dundee, DD4 6SW

Listed Status: Not listed

Balmore ★

Community pub that still retains an over 100 year old gantry and remains of what locals call 'the bully' (an off sales?).

At the base of a four-storey stone tenement. On the Balmore Street side there are four stained glass windows with in the centre of them painted Scottish countryside scenes and one of a harbour. On the Dura Street side are two more similar windows. The corner and right-hand exterior doors lead to the L-shaped public bar implying it was once divided into two; the left hand door on Dura Street leads into a vestibule and beyond to a passage which leads to the lounge bar. On the left hand side of the passage is a dado of old panelling, an ornately carved pillar with. On the right hand side of the passageway. There is a small old bar counter and above it an arch shaped opening in the partition called the 'Bully'.

The bare wooden floored public bar retains an over 100 year old gantry facing two sides and curves in the middle. It is of five bays with carved pillars in bays one and four a carved frieze, and topped off here are, unusually, double broken pediments. The lower part of the gantry has carved pilasters holding up the shelves). It has pilasters, a number of match strikers. All around the room is old dado panelling. The lounge looks like it was refitted in the 1980s? but does have a colourful (modern) stained glass window.



Main Bar

Dundee

96-98 Clepington Road, Dundee, DD3 7SW

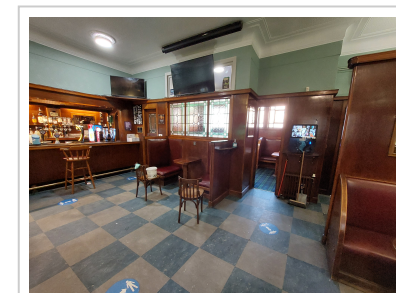
Tel: (01382) 819957

Email: Clepbar@gmail.com

Listed Status: B

Clep Bar ★★★

Behind the simple single-storey exterior is a truly superb survival. The pub was built (or was perhaps created out of a pair of shops) for Thomas Fitzpatrick, spirit dealer, in 1940-1. It was probably designed by J. MacLellan Brown, the city architect. The dating is very unusual since pub-building generally came to an abrupt full-stop after the outbreak of war. The layout of public bar, lounge, and jug and bottle is just as it was originally. The public bar is U-shaped and has a projecting fireplace behind which are the tiny loos, entered through very narrow doors: the gents, still has original tiling. This main bar has original three-quarter-height panelled walls, plus counter and gantry. The fixed bench seating has a number of solid wooden dividers and the typically Scottish little fixed tables are original too. The delightful lounge also has partitions forming seating bays, more small fixed tables and panelling, together with leaded windows, including one advertising Bernard's Edinburgh Ales. There are working bell-pushes and those in the lounge are still responded to.



Main Bar

Dundee

117 Strathmartine Road, Dundee, DD3 7SD

Directions: Corner of Moncur Crescent.

Tel: (01382) 826549

Email: frewsbar@hotmail.co.uk

Real Ale & Cider: Real Ale

Listed Status: C

Frews Bar ★★★

This became a pub in 1915, having previously been a grocery store and was remodelled by local architects Frank and Harry Thomson. It has three rooms, with a public bar of 1915 flanked by a pair of important Art Deco lounges. The public bar has been amalgamated with a tiny snug on the right, by the removal of a short partition (evident in the floor). On the back of one of the tobacco jars ornamenting the inglenook-style fireplace is written 'H & F Thomson Architect, Alex FairWood Carver, John Scott Joiner' and 'Mr Stewart LicenceHolder 18th October 1915'. The gantry with bevelled mirror panels may well date from 1915 too, although other fittings are more recent. The metal-framed windows are typical inter-war work and the corner ones depict a plough in stained glass. On the right is a lounge with stylish inter-war panelling, counter front and brass bell-pushes. At the rear is a second lounge which also retains its Art Deco fittings, including the metal-fronted counter, small fixed tables and other fittings. This, the 'Sporting Memories Lounge', is only open Friday and Saturday, although you may be able to visit on request. The plethora of pictures and sporting memorabilia make it hard to appreciate the full effect of the 1930s work. Listed in 2008 following survey work by CAMRA.



Lounge

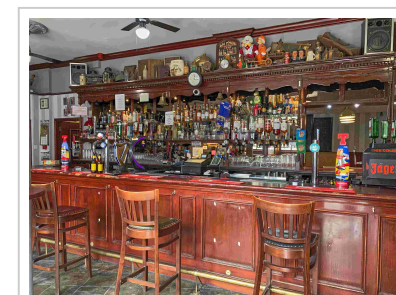
Dundee

16 Victoria Road, Dundee, DD1 1JN

Tel: (01382) 226062

Ladywell Tavern ★

Once the tap for the Victoria brewery, the pub was converted from an existing building around 1900 though the frontage is more recent (around 1950).. The original five-bay mirrored gantry with shelves supported by carved pillars is the star feature of the main bar. The panelled counter is fairly recent in origin and the other fittings are also modern. The snug at the back contains nothing of historic interest.



Servery

Dundee

9 Crichton Street, Dundee, DD1 3AP

Tel: (01382) 690434

Real Ale & Cider: Real Ale and Real Cider

Listed Status: Not listed

Pillars ★



Servery

Dundee

165-167 Perth Road, Dundee, DD2 1AS

Tel: (01382) 667783

Email: thespeedwellbar@googlemail.com

Website: <http://www.speedwellbar.co.uk>

Real Ale & Cider: Real Ale

Public Transport: Near Railway Station (Dundee) and Bus Stop

Listed Status: B

Speedwell Bar ★★★

At the base of a four-storey tenement, the Speedwell has a lovely Edwardian interior of 1903 by architects John Bruce & Son for the property developer James Speed, whose name is enshrined in the mosaic at the entrance (his initials also appear at the top of the building opposite). The 'well' in the name is because the pub was said to be built on the site of one. It comprises two distinct parts. Right of the central entrance is a large L-shaped bar, which has a most impressive four-tier mirrored gantry. This bar is split into two by a low screen and also has an ornate Jacobean ceiling. To the left are a couple of rooms separated by a glazed screen. Both have wall-panelling, original fireplaces and bell-pushes but the seating is modern. The gents' is worth a look for their Edwardian lavatorial excellence of mosaic flooring, white tiling, Shanks' 'Odourless' urinals and cistern. At the back of the servery are a couple of dials, the remnants of the old air pressure beerdispense system. The pub has been owned and run by the Stewart family since 1995. Customers are welcome to bring their own food in from neighbouring shops. The pub is still commonly known as 'Mennie's' after the family that kept it from the 1920s to 1995.



Right-hand side of Public Bar

Dundee

42 Union St, Dundee, DD1 4BE

Tel: (01382) 221366

Public Transport: Near Railway Station (Dundee) and Bus Stop

Listed Status: Not listed

Star & Garter ★



Saloon Bar

Closed Pubs

The following pubs would have been main entries in this guide had they currently been open

Aberdeen & Grampian

Banchory

22 High Street, , Banchory, AB31 5SR

Directions: In town centre on main North Deeside road, opp West church

Tel: (01330) 822547

Email: Enquiries@DouglasArms.co.uk

Website: <http://douglasarms.co.uk>

Real Ale & Cider: Real Ale

Public Transport: Near Bus Stop

Listed Status: Not listed

Douglas Arms Hotel ★

A popular pub that doubles as a hotel with a public bar that has retaining its main features from a refitting of c.1900. The little-changed public bar is dominated by a long panelled counter and a corresponding gantry, the centre part of which has five bays with depressed arches. At each end of the counter there are tall, glazed display cases and from the back of the bar are two hatches (possibly modern insertions) to the rear games room. There are a pair of noteworthy advertising mirrors: on the left one for W B Black of Aberdeen's East India Pale Ale; on the right for Queen's Ale and Vigor Stout from Thompson Marshall (also of Aberdeen). The fixed seating has been replaced and there are a variety of other rooms that are mostly modernised.



Public Bar

Argyll & The Isles

Lochgilphead

13 Lochnell Street, , Lochgilphead, PA31 8JL

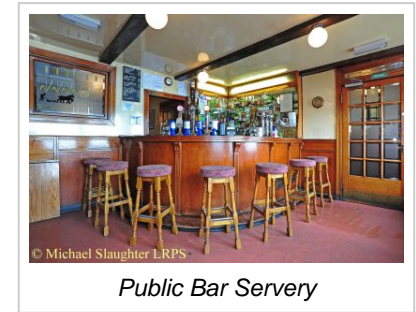
Tel: (01546) 602492

Public Transport: Near Bus Stop

Listed Status: C

Commercial ★★★

A splendid, small town, three-room pub with a rather remarkable interior. The building itself dates from the early 19th century and was taken over by Ruaridh McKenzie in 1944 who kept the pub until 1983. It is believed he completely refitted it in 1945–6 which would make it an extraordinarily early example of post-war pub refurbishment (the date is almost hard to believe since there was hardly any major work in pubs until about 1953 due to austerity restrictions). In the small public bar there is a curved panelled counter, a gantry with mirrored shelving, and a brick fireplace with mirror signed 'Ruaridh' who wishes all 'Ceud Mile Failte'. A multi-pane door advertises the smoke room and lounge. The smoke room comes first and has a curious door which can separate the smoke from either the corridor or the servery. At the rear is the lounge with a large brick fireplace and original tables. A fun feature is the tiny gents' loo and its sliding door with glass inscription (for the avoidance of any doubt) 'Gents Lavatory – Slide it Chum'.



Ayrshire & Arran

Kilmarnock

22-24 West George Street, , Kilmarnock, KA1 1DG

Tel: (01563) 257641

Email: fannybygaslight1846@outlook.com

Real Ale & Cider: Real Ale

Public Transport: Near Railway Station (Kilmarnock) and Bus Stop

Listed Status: Not listed

Fanny by Gaslight ★

Very much a young persons' rock music pub with bands on Friday nights, but still of historic interest behind the gaudy paint and dim lighting. Formerly the Fifty Waistcoats and originally the Railway Tavern, the pub was remodelled by Charles H Robinson in 1903, when a massive, oval-shaped bar counter with pilasters spaced regularly along it and a low, three-tier island gantry were installed. In 1980, the bar was reduced by 2.5 m (8 ft) on either side - a new floor makes it difficult to spot the extent of the bar originally but take a look at the island gantry and you can see how it is curved at the lower shelves level on the right but on the left hand side it finishes abruptly. The inner portion of the vestibule on the right hand side has been lost otherwise the room is largely intact with four cast-iron columns with florid Corinthian capitals supporting the beams for the upper floor. The rear snug and office are no longer in use. The large lounge upstairs was turned into a flat in the mid-1980s.



Interior

Borders

Galashiels

65 Overhaugh Street, , Galashiels, TD1 1DL

Tel: (01896) 752621

Public Transport: Near Railway Station (Galashiels)

Listed Status: Not listed

Galashiels

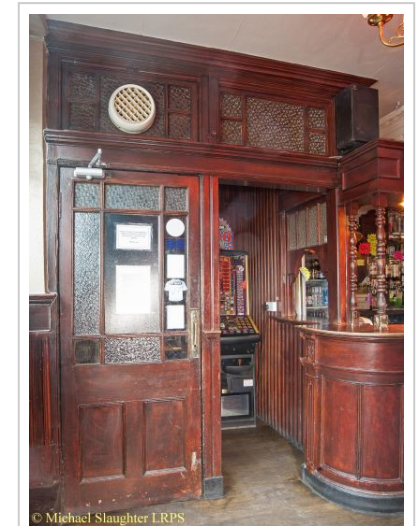
22 High Street, , Galashiels, TD1 1SE

Tel: (01896) 753520

Listed Status: C

Glue Pot ★

A back street local with some early 20th century fittings. The remains of the former jug bar can be seen as you enter while the public bar has a bare wood floor, panelled walls, wood-surround fireplace, an oldish counter and a genuinely old gantry with bevelled mirror panels.



Jug Bar

Harrow Inn ★

Town centre pub built 1868, refitted c.1900, and still retaining its splendid island bar counter with canopy running all the way around. The counter retains old match strikers and water taps both are now no longer in use; the pot shelf is modern. The small island gantry could be over 30 years old, and there are remains of two old fireplaces in this large panelled room. The public bar has been opened-up to the area at rear right.



Interior

Peebles

27- 29 Old Town, , Peebles, EH45 8JF

Directions: A72 to west of town centre

Tel: (01721) 724306

Email: andrew.hittle77@gmail.com

Real Ale & Cider: Real Ale

Public Transport: Near Bus Stop

Listed Status: Not listed

Tweedsmuir

TWEEDSMUIR, , Tweedsmuir, ML12 6QN

Directions: A701, between Moffat and Broughton

Tel: (01899) 880272

Website: <https://www.tweedsmuir.scot/>

Listed Status: C

Neidpath Inn ★

Built as a private house in Mid-Victorian times, it was converted into a pub in 1910. A passage with a fielded panelled dado runs from the front left door to the rear where there is a modern lounge. On the right, the L-shaped public bar has a mirrored gantry added in 1910 with two main bays and a walkway for staff in the centre. The old bar counter has match strikers along the front and an old (no longer working) 'Alan & Bogle, Glasgow' water tap on the bar, but it has lost its trough along the base. There is a good wood surround and brick fireplace with a bevelled mirror in the mantelpiece. A small snug on the left has disappeared.



Interior 1

Crook Inn ★

Update 2023 All the indications are that the work to the pub to bring it back into use will see the Art Deco bar fittings replaced with new ones. The toilets are more likely to survive unscathed.

An early 19th-century coaching inn (although claimed to date from 1580) with an extension in c.1936. Most of the Art Deco fittings of that era, including the finest surviving ladies' and gents' loos, has been retained. Walk through the terrazzo-floored lobby and past the period hotel reception to find Willie Wastle's Bar at the rear. This is just as it was, with a lapped wood door and bar counter, gantry of shelves, stone fireplace with a circular hearth and copper hood. Even the chunky furniture - chairs, tables including a barrel one, and corner seat - is original.



Public Bar

Westruther

, , Westruther, TD3 6NE

Tel: (01578) 740275

Email: sibbald.a@yahoo.com

Listed Status: B

Old Thistle Inn ★★

Built 1721 originally as two cottages and a coach house at one time, this is a country pub with three small rooms that last changed in the late 1940s. When the nearby Spottiswood House was demolished during World War II a number of fittings were imported to the pub. On the right is a very small public bar with an old bar counter, gantry, fixed seating and a semi-circular brick fireplace with wooden seats each side. The carved mantelpiece including a central mirror and carved eagle may be over 250 years old having come from Spottiswood House. A bell push on the left of the servery is unusually hidden by a flap with the wording "Ring". In the entrance passage there is the old off-sales hatch at the bottom of the stairs. To the left is a small lounge with old 'Lounge' lettering on the door. The rooms retain their numbers.



Greater Glasgow & Clyde Valley

Renton

123 Main Street, , Renton, G82 4NL

Directions: On the B857

Tel: (01389) 752088

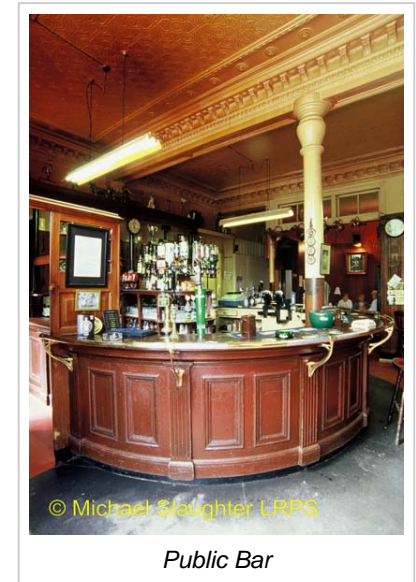
Public Transport: Near Railway Station (Alexandria)

Listed Status: B

Central Bar ★★★

UPDATE 2020 The pub is closed and planning permission has been granted for conversion to residential. It is therefore highly unlikely that it will reopen.

Built in 1893, this down-to-earth drinkers' pub occupies the ground floor of a two-storey tenement. Behind the rather rundown frontage is an interesting interior. The panelled bar has a sweeping semi-circular counter and an elaborate ceiling and cornices. The gantry against the side wall houses spirit casks in each of its four bays: unusually, each has two taps and must be divided internally. There is also a free-standing central gantry within the servery for bottles, glasses etc. Opposite is a lovely mirror advertising Old Oak Tree whisky. On the left is an intact but disused jug and bottle compartment. At the rear were two sitting rooms (it seems that once there were two more on the right) both opened up to the bar: the left one has slatted seating but that to the right was recently opened out, and is devoid of seating.



Public Bar

Loch Lomond, Stirling & The Trossachs

Falkirk

150-152 Grahams Road, Grahamston, Falkirk, FK2 7BY

Tel: (01324) 880777

Listed Status: C

Star ★

This 1930s Art Deco drinkers' pub is well worth a visit to see what may be the only glass bar counter in the country, made up of some 160 ribbed glass segments and with a wooden top. The 1930s fittings include a good set of front windows and diagonal door handles. The back gantry has a base, which could date from the 1930s, with a series of drawers, and a top part of sunken shelving with some glass shelves added in the late 1950s. The walls have full height panelling; there is a 1950s brick fireplace in the opened-up area on the right, and all the fixed seating looks of a similar age. A door from Gowan Street leads into a passage that has an intact off-sales hatch with its two sliding windows. In the gents toilet the WC did have a working penny in the slot on the door until recently but this now resides on the wall of the lounge upstairs, which has a post-war bar counter, new bar top and new shelves for a gantry.



Public Bar

Tayside

Brechin

62 Market Street, , Brechin, DD9 6BD

Tel: (01356) 624449

Website: <http://www.thestableslounge.co.uk>

Real Ale & Cider: Real Ale

Listed Status: Not listed

Brown Horse / Stables ★

Former hotel retaining three small little-altered rooms, with a lounge added in the 1960s, also barely changed. The original entrance door has a colourful pictorial glass panel and leads to a very small bar on the right with fittings that may date from the early 20th century. The panelled bar counter has a match-striker under the lip and the three-bay back gantry features one large 'Bell's Perth Whisky' mirror centrepiece and four smaller whisky mirrors around it, two on each side. This half-panelled stand-up man's bar has no tables, just a couple of stools. Note the large bell box above one door.



Public Bar

Protecting Heritage Pubs Through Listing

Around half the pubs in this guide meet the strict criteria to be statutorily ‘listed’ as buildings of national architectural and historic interest. Historic Scotland (HS), on behalf of the Scottish Executive, has created the following three categories:

Category A Buildings of national or international importance, either architectural or historic, or fine little-altered examples of a particular period, style or building type.

Category B Buildings of regional or more than local importance, or major examples of some particular period, style or building type which may have been altered.

Category C Buildings of local importance, lesser examples of any period, style or building type, as originally constructed or altered, and simple, traditional buildings which group well with others in categories A and B or part of a planned group such as an estate or an industrial complex.

Listed Building Consent must be obtained where proposals would alter the character of the listed building. This applies regardless of the category and to work affecting both the outside and inside. Applications are made to the local planning authority which will consider applications in the light of the various guidance and policy documents issued by HS. Planning authorities must notify HS of their intention to grant consent on any category A or B buildings and for all demolitions, regardless of category.

Ten pubs in this guide are A listed with a further 34 being B listed and the same number C listed. All the other pubs are currently unlisted.

CAMRA has been active in nominating pubs for listing and will continue to do so – we consider that quite a few of the unlisted pubs in this guide have sufficient heritage importance to warrant listing.